

**MoMISC Meeting Agenda**  
**Molokai/Maui Invasive Species Committee**

**Date: May 21, 2007**

**Time: 9:30-11:30 am**

**Place: TNC Molokai Office, 23 Pueo Place, Molokai Industrial Park**

**Attendees:** Lori Buchanan/Kamalani Pali/Mapuana Hanapi-MoMISC, , Donald Maum-Mycogen Biologist, Bill Puleloa-DLNR/DAR Molokai Biologist, Guy Hughes-KNHP Wildlife Biologist, Bill Garnett-Rare Plant Species Recovery Molokai, Kali Arce/Alton Arakakai-UH Extension Service, Ed Misaki-MoMISC Chair/TNC Molokai Director, Ray Foster-Monsanto, Glenn Shishido/John Neizman-DoFAW, Kuhea Paracuelles-MC Environmental Coordinator

**I. Call to Order -- Introductions & Announcements, Approve Agenda**

**II. Molokai Updates -- Lori**

Molokai Prevention

- HISC 50K outreach projects, 50K Response & Control  
Bill – show economic value of not having certain Invasives (cattle and fireweed)
- Kahili Ginger—"Stop Buying, Stop Planting" campaign (Mapuana Hanapi, MoMISC Admin staff, helping with the campaign). Focusing on awareness. Pat Bily has approval for label change on Escort to use on Ginger in wet areas.
- Gooseberry—Only on Molokai (Halawa Valley). Expanded survey to the lower valley and found new populations (map passed out).
- False Awa—First detected in Kalae. Person got it from Halawa. Not a target, but efforts are being made to detect and remove. (Shown on Gooseberry Halawa Map).
- Gorse—January survey only found 2 seedlings. May survey in Kaahanui had no detections.

Molokai Detection -- Lori

- Coqui Frog – 2<sup>nd</sup> confirm report of coqui frog in Kualapuu. Possible introduction from lumber purchase at Home Depot in Honolulu. Kama Pali confirmed the detection and sprayed the citric acid formula. Home owner has not heard since spraying. Homeowner wasn't sure of reporting, but is well aware now that MoMISC will help in a positive way. Lori has informed OISC to follow up with Home Depot. MoMISC will do a Reponse Plan -- media blitz in Kualapuu (flyers, door to door, article in local papers-Molokai Dispatch and Molokai Times).
- Feb 15-16 Australian tree survey – still one in Kalae (priority—Ed to follow up) and one on west end (MoMISC will follow up).
- Aerial Surveys – completed May Miconia aerial survey, covered areas west of Waikolu. Lori shared a GIS map showing all MoMISC Miconia Surveys. No Miconia detection to date. Pelekunu to Waikolu has not been surveyed by MoMISC, but TNC has done surveys of those areas and have not detected Miconia.
- New Arundo detection – New landowner on Beach Place, Kaunakakai cleared land and cause Arundo to sprout. MoMISC will be removing by digging it out on May 22 (most

effective from experience with Kamiloloa occurrence).

- **Bill Puleloa**, State Invasive Aquatic Team alien algae survey & mapping—State wide effort to map all alien algae. Surveyed twice on Molokai. Confined to inner shore areas and not competing with other edible limu. Bill feels any removal projects should be low keyed and not affect any subsistence practices. Molokai people are very sensitive to several key marine initiatives that have been established by our legislature in the past few years.

Kuhea shared science studies (shared by DAR) of coral cover and how alien algae has decreased coral cover in study sites on Maui. Studies also showed that the decrease in coral cover decreased certain fish stocks.

Question is should MoMISC focus on *Gracilaria saliconia*? General consensus is that MoMISC will not work on *Gracilaria saliconia*, but rather let the State Invasive Aquatic deal with this species.

- **Kali Arce**. Stinging Nettle caterpillar – DOA confirmed. Ranch got it from Big Island foliage. They disposed of it.

#### Molokai Helicopter Prevention Protocol – **Bill Garnett**

Rapid assessment -- to detect any introduction from use of the helipad

Bill will have a write up to help with Heliops protocol to prevent spreading of invasives.

MoMISC (and MISC) to work on surveying helicopter companies flying between islands to see if they maintain best practices to prevent the spread of invasives between island.

Getting agencies from other islands to have separate field gear for each island.

### **III. MISC/CGAPS (Maui Nui/Statewide) Updates -- Teya**

- ISC funding increased from the County this year, but that was specifically to address the need to make up funding for the Hana miconia crew after the loss of funding from Haleakala National Park (\$300K) and to ramp up efforts on coqui frogs (\$200K). We don't expect any changes in the MoMISC budget this year, other than salary adjustments.
- The HISC Outreach Working Group met on Friday. It looks like there will be adequate funds to maintain existing positions, but maybe only around \$50K for outreach projects. A subsequent discussion with Mindy indicated that the \$50K could be expanded, but it would probably come at the expense of Response and Control funds.
- Early Detection Meeting: Held last Tuesday on Oahu. The major focus of the meeting was to review how the different islands approach Early Detection. We used the Oahu (OISC) model as a springboard for discussion. Molokai and Lanai have been completed in recent years (2005 for Molokai, 2007 for Lanai). We also reviewed the strategies used by different ISCs for selecting targets. MISC will be putting out a draft matrix for the MISC members to review. OISC's strategy was based on New Zealand matrix, which is what MISC intended to use as well. However, OISC modified it to incorporate the Weed Risk Assessment scores and also added an "Effect on Agriculture" in lieu of "Species persistence over time."
- Kuhea—ISC funding for MISC about \$200,000. MISC expected \$750,000.

#### **IV. New Business, Committee Member Concern/Issues**

- **MoMISC Stop Buying, Stop Planting Campaign** – flyers showing ornamentals that are available for sale and with potential to be an invasive on Molokai. Website's list a lot more extensive (hear.org). Flyers showing potential list will be passed out to MoMISC committee members to get input on what should be on the list.
- **MoMISC Website** – It's in existence on Hear.org. and navigate to ISC.
- **Ring Spot Virus, Lanai – Alton** – detected last winter and now it occurs all over Lanai. Molokai still free of RSV. Depending on what HDOA decides, MoMISC may be able to help with awareness campaign. Focus of campaign could be on the fact that Molokai is free of lots of pathogens found statewide.
- **Kalaupapa Update – Guy Hughes** – Sits on the Natural Resource Council for Pacific Region NPS. Responsible to present examples of ISC model. Guy will be using MoMISC as a shining example of an ISC model. Guy to work with Lori to help develop the "product" or successes of MoMISC efforts.

Bill to allow NPS to work outside the Park is through Congress and in conference, one step before require President's signature. This will help greatly with the Park's partnership efforts statewide.

Snake sighting reported in April, at Kalaupapa is possible "flower pot snake". Guy followed up on sighting, but did not find anything.

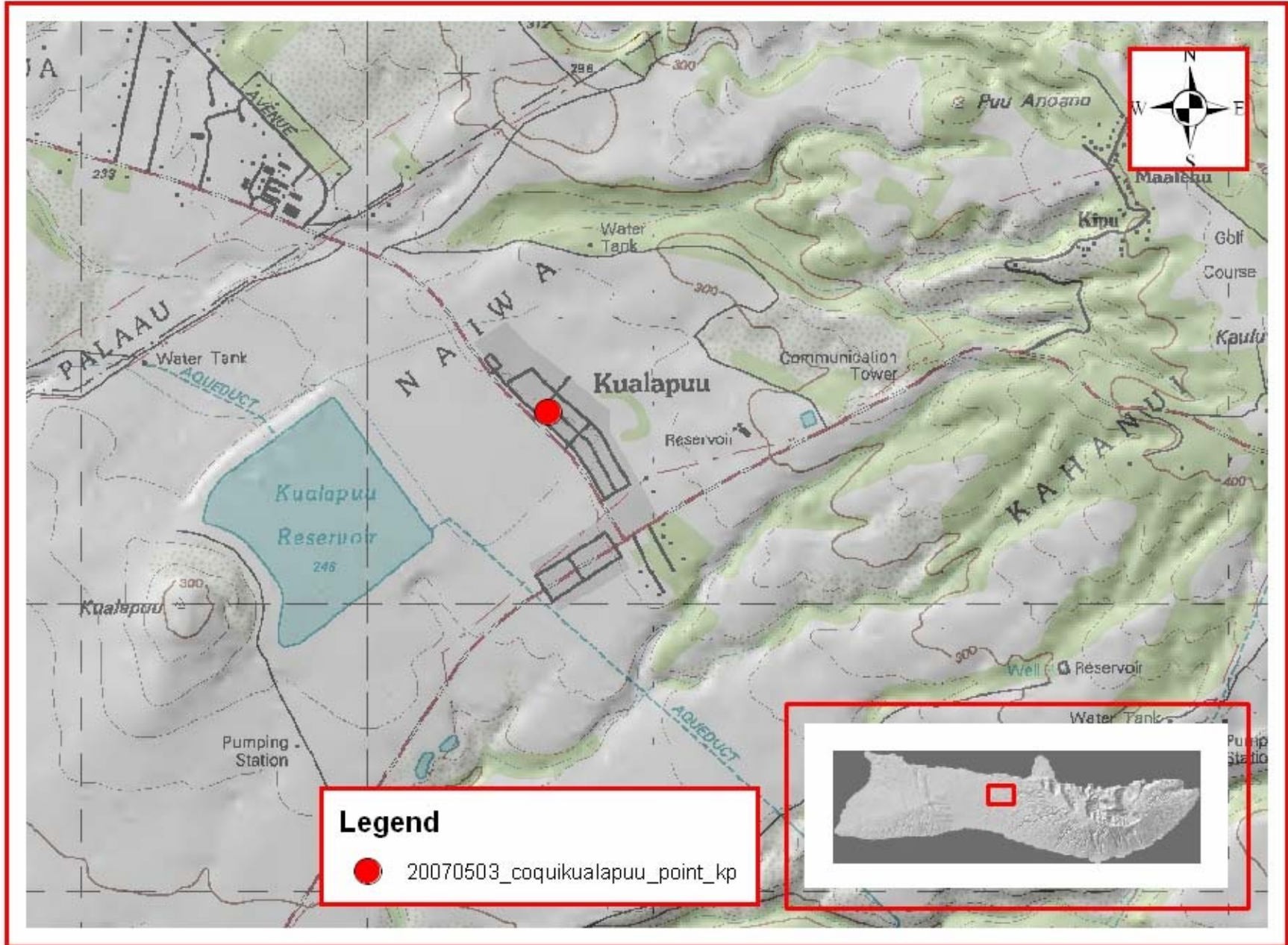
- **New land lease (99 years) – Ray Foster (Monsanto)** – 700 acres to 1600 acres, which will net about 100 acres more per year.

Both Mycogen and Monsanto are removing wiliwili windbreaks that have died from the gall wasp infestation.

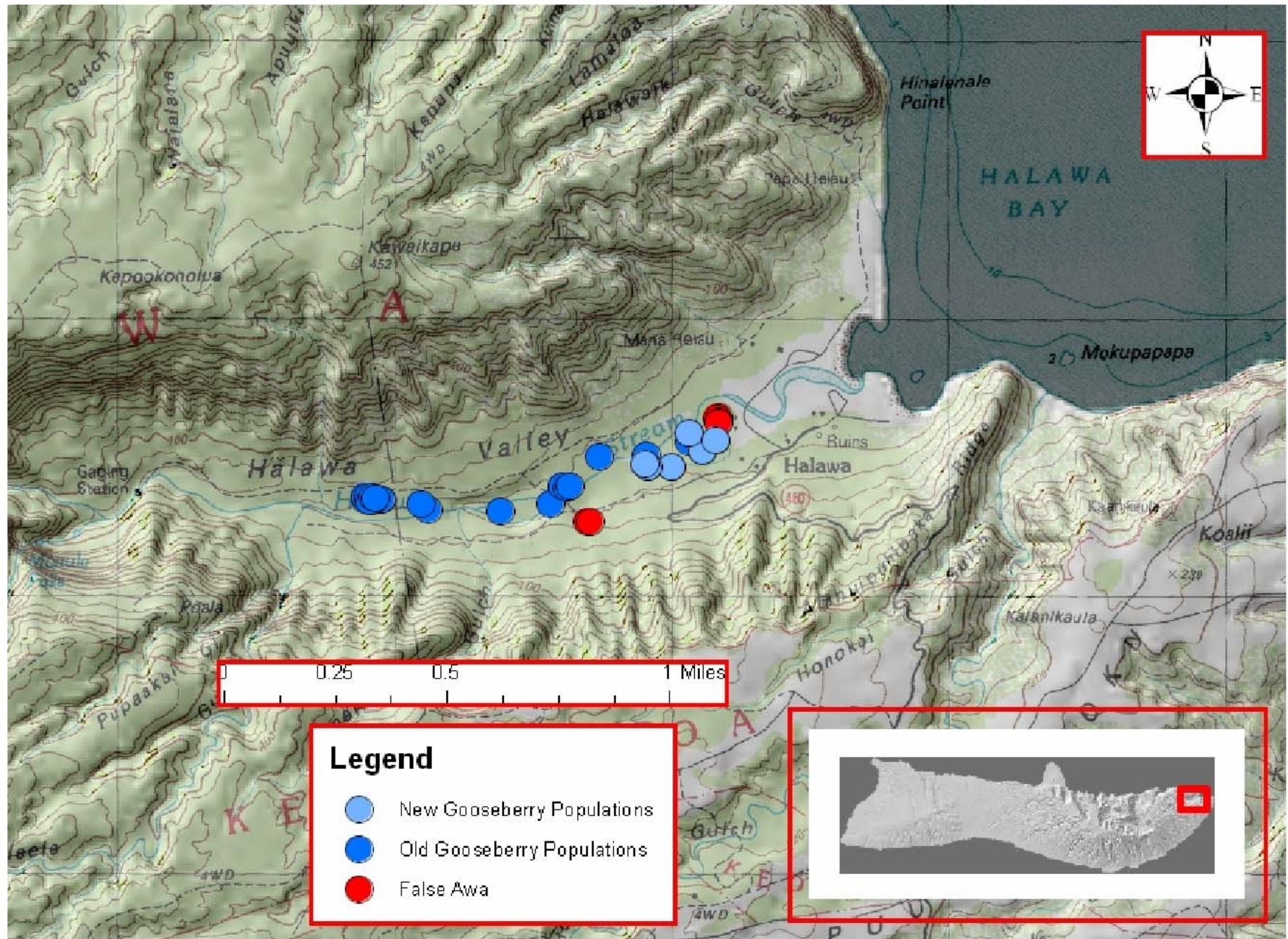
#### **V. Schedule 1<sup>st</sup> Quarter (FY07) Meeting and/or Other Activities: August 13, 2007**

**Others Past Attendees:** Rob Hauff-DOFAW Forest Health Coordinator, Joey Joao-MR Contract Hunting, Carl Brito-DOT Molokai Airports, Debbie Kelly-MLSWCD, Teya Penniman-MISC, Bob Joy-Plant Material Center, Wailana Moses-TNC Molokai Weed Coordinator

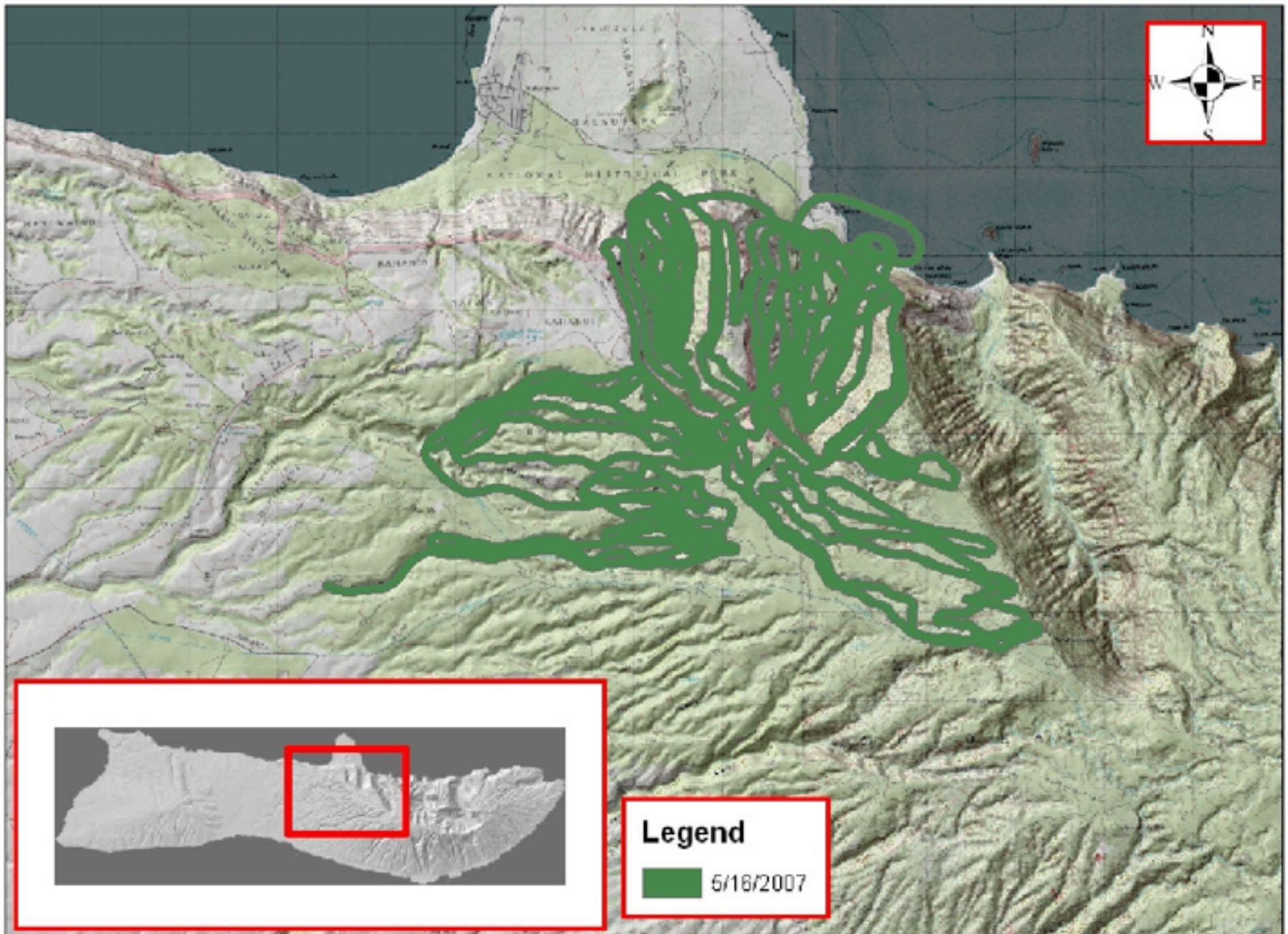
# 20070503 COQUI FROG



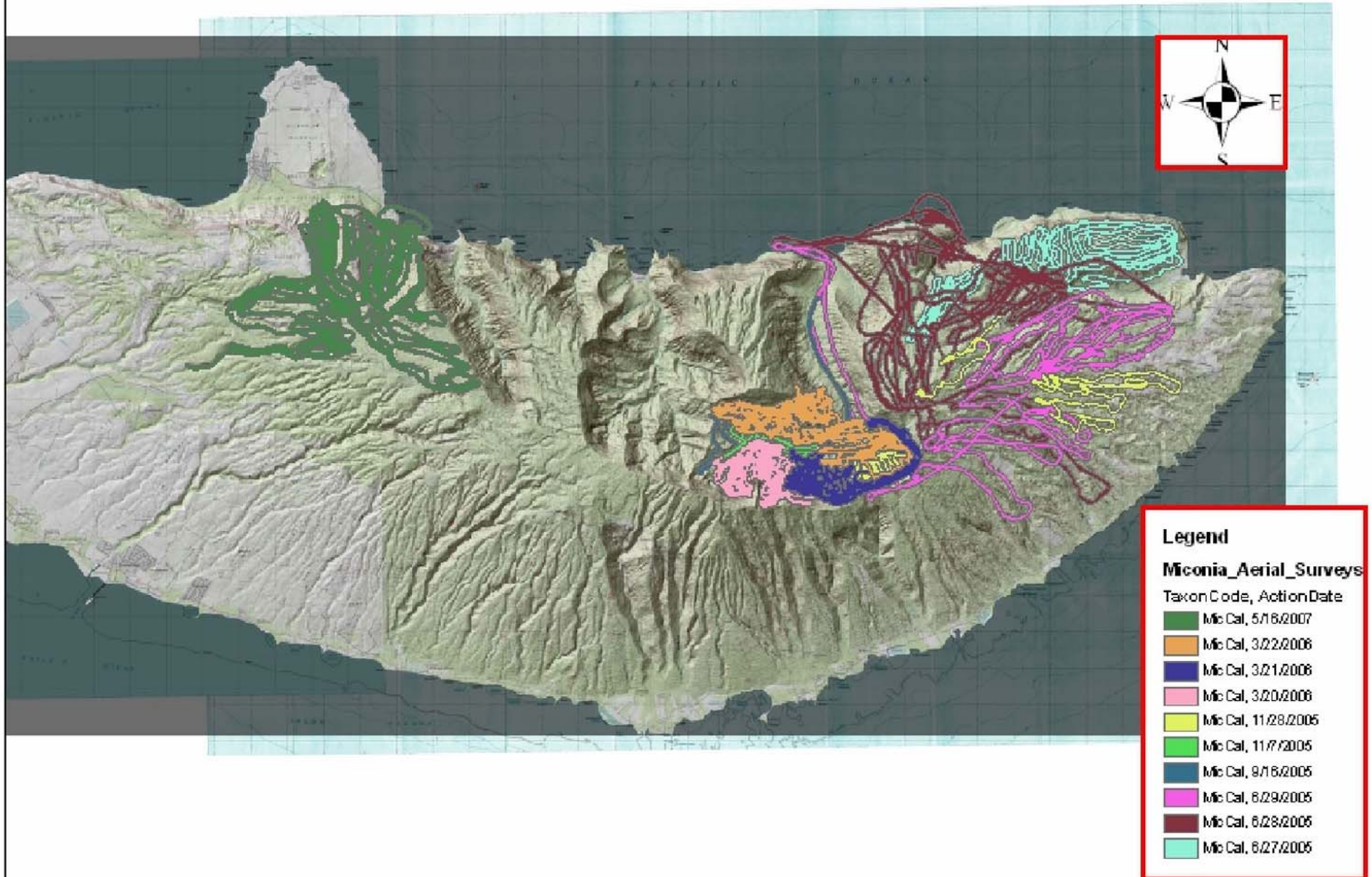
# 2007 HALAWA TARGET SPECIES



# 20070516 Miconia Aerial Survey



# Miconia Aerial Surveys



# Australian Tree Fern Detections

