



Coqui News

Online at www.hear.org/kisc/coqui_news

Kauai Invasive Species Committee

Work Notification
December 28 - January 1

Work update at Lawai infestation site

Upcoming control work will not be scheduled during the week of December 28, 2009.

Due to the holiday and crew-member vacations, **work will not be performed at the site in Lawai during this week.**

This last week the crew was scheduled to apply citric acid and herbicide. After the holidays we will continue with the more in-depth work summaries.

We hope that everyone has a safe holiday with many happy moments with friends and family!

Thanks go out to the Kauai Coqui Frog Working Group members who collaborate and assist with this project: Hawaii Department of Agriculture, College of Tropical Agriculture and Human Resources, DLNR-Division of Forestry and Wildlife, County of Kauai, Garden Island RC&D, Kukui'ula Development, A&B Properties, and Lawai Highland neighbors.



Happy New Year!

Help keep Kaua'i Coqui-Free!
Report coqui frogs!
[643-PEST](tel:643-PEST)

POSTED:
Wednesday,
December 23, 2009

In this issue:

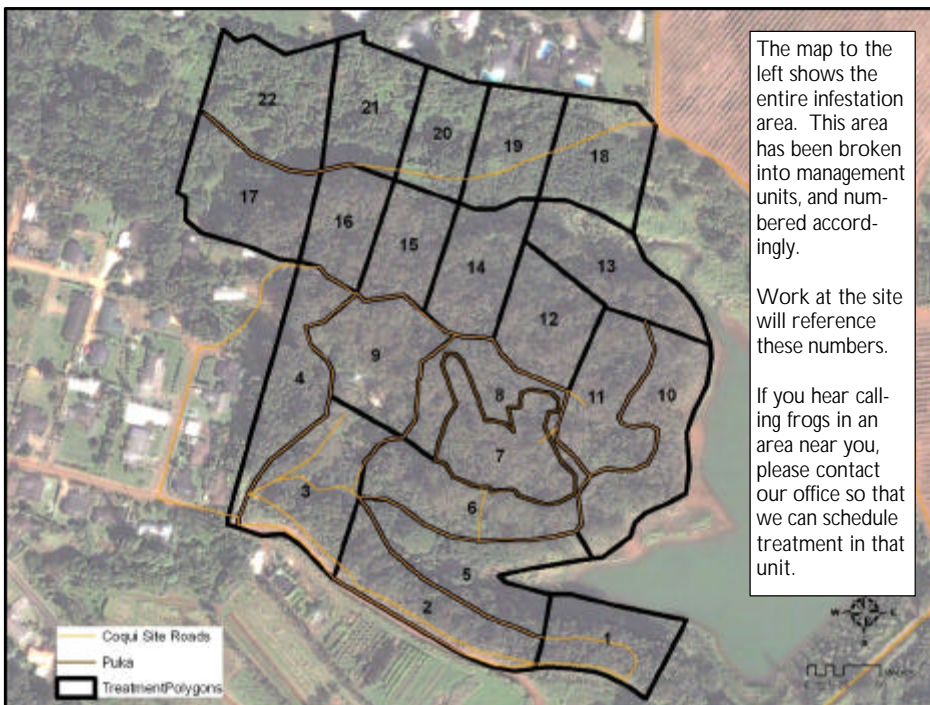
| | |
|--------------------------------------------------------|---|
| <i>Work Update</i> | 1 |
| <i>Management Area Map</i> | 1 |
| <i>Contact Phone</i> | 1 |
| <i>Tidbit</i> | 1 |
| <i>A comparison between greenhouse frogs and coqui</i> | 2 |
| <i>Notification policy link</i> | 2 |

Want more info?
www.hear.org

Contact Phone Numbers:

- **KISC:** 821-1490
(from 7:00 am to 4:00 pm)
- **Crew Supervisor:**
651-8781
- **Hawaii Department of Agriculture:** 274-3069
- **Pest Hotline:** 643-PEST

Management Area Map






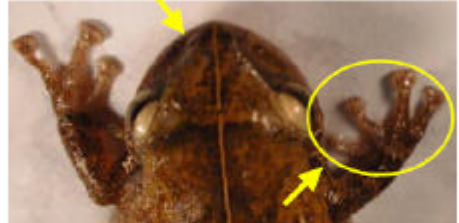
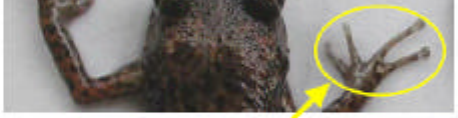



Tidbit

Happy New Year!



The difference between Greenhouse and Coqui frogs:

| Characteristics | GREENHOUSE FROG <i>E. planirostris</i> | PLEASE REPORT! COQUI FROG <i>E. coqui</i> PLEASE REPORT! |
|----------------------------------------------------------|-------------------------------------------------------------------------------------------------------------------------------------------------------------------------------------------------------------------------------------------------------------------------------|-------------------------------------------------------------------------------------------------------------------------------------------------------------------------------------------------------------------------------------------------------------------------------------------------------------------|
| Body shape and size (maximum adult length) | <ul style="list-style-type: none"> < 1 inch long Narrower body shape <p>(not reportable)</p>  | <ul style="list-style-type: none"> Slightly > 1 inch long; adults about 1 1/2 times larger than greenhouse frogs Rounder body shape  |
| Color | <ul style="list-style-type: none"> Usually copper colored, mottled with black spots No mid-dorsal line (along back from nose to tail) Warty textured skin  | <ul style="list-style-type: none"> Greater variation in color, from light yellow to dark brown May be mottled with black spots Mid-dorsal line (stripe along back) may or may not be visible  |
| Shape of snout (head portion in front of eyes) | <ul style="list-style-type: none"> Narrower snout  | <ul style="list-style-type: none"> Broader, bow-shaped snout  |
| Toes and toe pads | <ul style="list-style-type: none"> Claw-like toes; toe pads not distinct  | <ul style="list-style-type: none"> Suction cup-like toe pads  |
| Male calling sounds | <ul style="list-style-type: none"> Soft, bird-like or cricket-like chirping | <ul style="list-style-type: none"> Loud two-tone call, "ko-kee" |
| Habitat | <ul style="list-style-type: none"> Exclusively on ground level | <ul style="list-style-type: none"> From ground level to tops of trees |
| Quarantine status | <ul style="list-style-type: none"> Not a quarantine pest | <ul style="list-style-type: none"> Only an inter-island quarantine pest |

This poster can be found at http://www2.ctahr.hawaii.edu/oc/freepubs/pdf/coqui_id.pdf

Work Notification Policy:

<http://www.hear.org/kisc/pdfs/200704coquiworknotificationpolicy.pdf>