



Coqui News

Online at www.hear.org/kisc/coqui_news

Kauai Invasive Species Committee

Work Notification
November 30 - December 4

Work update at Lawai infestation site

Upcoming control work is scheduled to continue the week of November 30. Crews will be working during daylight hours and up until around 9:30 pm.

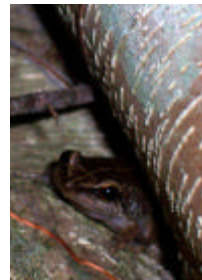
The field crew work is scheduled for Monday and Tuesday.

This past week herbicide was sprayed in sections 14-22 and citric acid was sprayed in sections 10, 16, and 17.

Monday night 5 males and 5 juveniles were found in section 10. After application of citric acid and herbicide no frogs were heard on Tuesday.

Work this week will include applying herbicide in section 5 - 8 and citric acid in sections 4, 10, 17, and wherever any calling frogs are heard.

Thanks go out to the Kauai Coqui Frog Working Group members who collaborate and assist with this project: Hawaii Department of Agriculture, College of Tropical Agriculture and Human Resources, DLNR-Division of Forestry and Wildlife, County of Kauai, Garden Island RC&D, Kukui'ula Development, A&B Properties, and Lawai Highland neighbors.



Coqui hiding

Help keep Kaua'i Coqui-Free!

Report coqui frogs!

643-PEST

POSTED:

Wednesday,

November 25, 2009

In this issue:

| | |
|--|---|
| <i>Work Update</i> | 1 |
| <i>Management Area Map</i> | 1 |
| <i>Contact Phone</i> | 1 |
| <i>Tidbit</i> | 1 |
| <i>A comparison between greenhouse frogs and coqui</i> | 2 |
| <i>Notification policy link</i> | 2 |

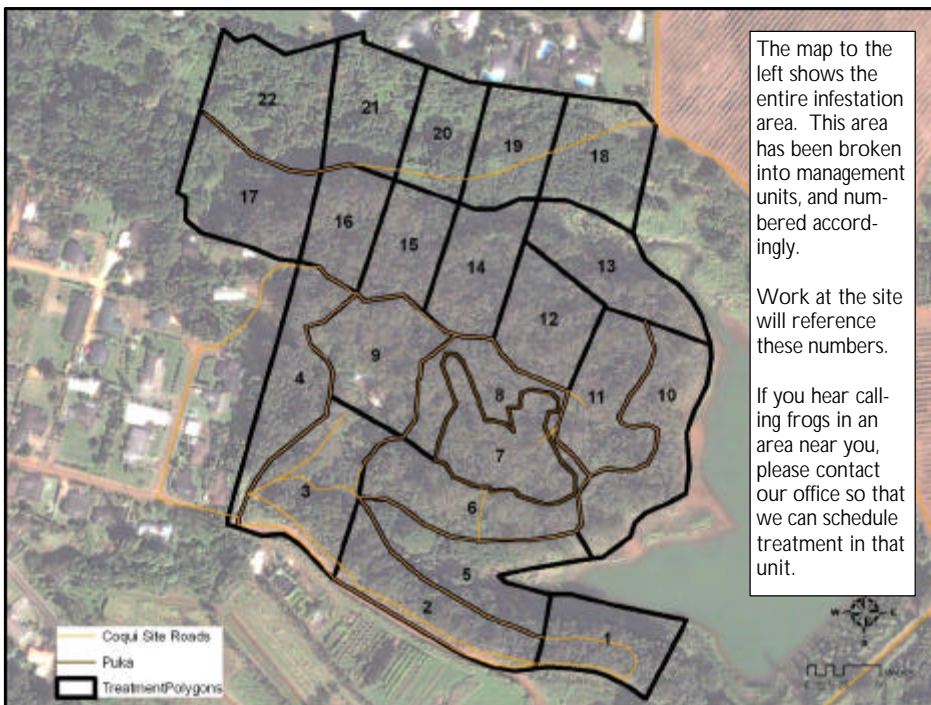
Want more info?

www.hear.org

Contact Phone Numbers:

- **KISC:** 821-1490
(from 7:00 am to 4:00 pm)
- **Crew Supervisor:**
651-8781
- **Hawaii Department of Agriculture:** 274-3069
- **Pest Hotline:** 643-PEST

Management Area Map






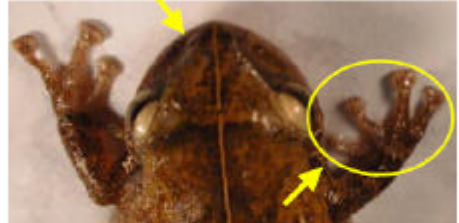
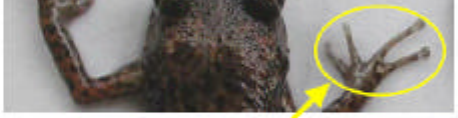



Tidbit

Densities of Coqui populations fluctuate depending on the season and habitat. Generally, densities are higher during the latter half of the wet season and decrease during the dry season.



The difference between Greenhouse and Coqui frogs:

| Characteristics | GREENHOUSE FROG <i>E. planirostris</i> | PLEASE REPORT! COQUI FROG <i>E. coqui</i> PLEASE REPORT! |
|--|---|---|
| Body shape and size (maximum adult length) | <ul style="list-style-type: none"> < 1 inch long Narrower body shape <p>(not reportable)</p>  | <ul style="list-style-type: none"> Slightly > 1 inch long; adults about 1 1/2 times larger than greenhouse frogs Rounder body shape  |
| Color | <ul style="list-style-type: none"> Usually copper colored, mottled with black spots No mid-dorsal line (along back from nose to tail) Warty textured skin  | <ul style="list-style-type: none"> Greater variation in color, from light yellow to dark brown May be mottled with black spots Mid-dorsal line (stripe along back) may or may not be visible  |
| Shape of snout (head portion in front of eyes) | <ul style="list-style-type: none"> Narrower snout  | <ul style="list-style-type: none"> Broader, bow-shaped snout  |
| Toes and toe pads | <ul style="list-style-type: none"> Claw-like toes; toe pads not distinct  | <ul style="list-style-type: none"> Suction cup-like toe pads  |
| Male calling sounds | <ul style="list-style-type: none"> Soft, bird-like or cricket-like chirping | <ul style="list-style-type: none"> Loud two-tone call, "ko-kee" |
| Habitat | <ul style="list-style-type: none"> Exclusively on ground level | <ul style="list-style-type: none"> From ground level to tops of trees |
| Quarantine status | <ul style="list-style-type: none"> Not a quarantine pest | <ul style="list-style-type: none"> Only an inter-island quarantine pest |

This poster can be found at http://www2.ctahr.hawaii.edu/oc/freepubs/pdf/coqui_id.pdf

Work Notification Policy:

<http://www.hear.org/kisc/pdfs/200704coquiworknotificationpolicy.pdf>