



# Coqui News

Online at [www.hear.org/kisc/coqui\\_news](http://www.hear.org/kisc/coqui_news)

Kauai Invasive Species Committee

Work Notification  
November 16—20

## Work update at Lawai infestation site

Upcoming control work is scheduled to continue the week of November 16, 2009. Crews will be working during daylight hours and up until around 9:30 pm.

The field crew work is scheduled for Monday and Tuesday of this week.

This last week the crew was also able to apply herbicide sections 10, 13, and 18 – 22 in a continuing effort to alter the coqui habitat.

The crew also applied citric acid in sections 4, 13, and 16. The crew identified one mature calling frog and a couple of juveniles that were too high to spray in section 4.

This week herbicide will be applied in sections 14-16 and citric acid in sections 4, 16, 17

and wherever any calling frogs are heard.

Thanks go out to the Kauai Coqui Frog Working Group members who collaborate and assist with this project: Hawaii Department of Agriculture, College of Tropical Agriculture and Human Resources, DLNR-Division of Forestry and Wildlife, County of Kauai, Garden Island RC&D, Kukui'ula Development, A&B Properties, and Lawai Highland neighbors.



Captured coqui

Help keep Kauai Coqui-Free!  
**Report coqui frogs!**  
[643-PEST](http://643-PEST)

POSTED:

Friday, November 13, 2009

### In this issue:

<i>Work Update</i>	1
<i>Management Area Map</i>	1
<i>Contact Phone</i>	1
<i>Tidbit</i>	1
<i>A comparison between greenhouse frogs and coqui</i>	2
<i>Notification policy link</i>	2

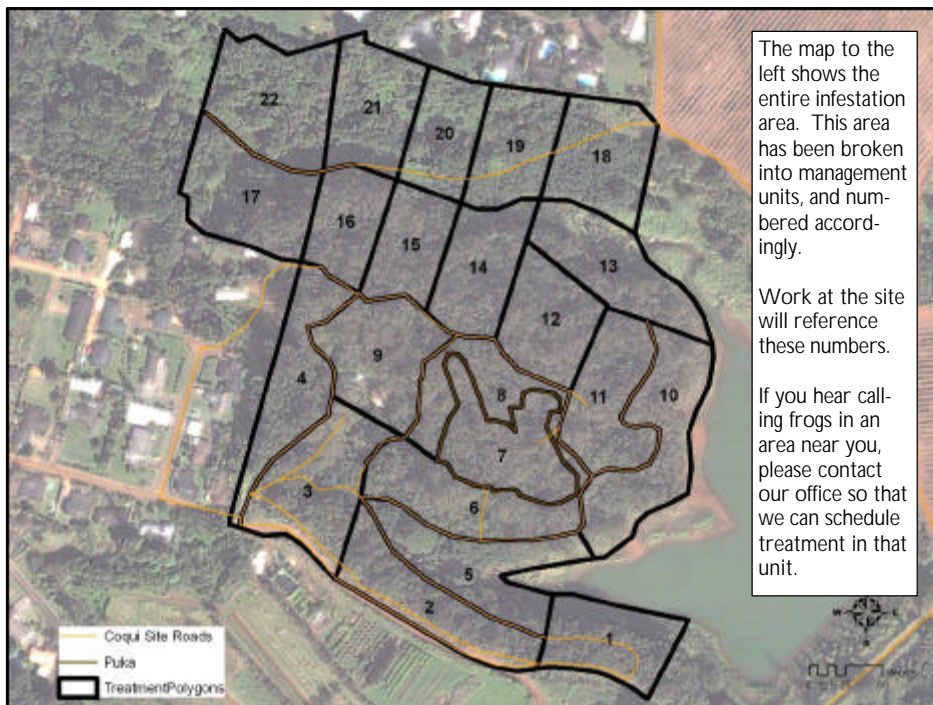
Want more info?

[www.hear.org](http://www.hear.org)

### Contact Phone Numbers:

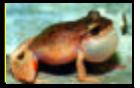
- **KISC:** 821-1490  
(from 7:00 am to 4:00 pm)
- **Crew Supervisor:**  
651-8781
- **Hawaii Department of Agriculture:** 274-3069
- **Pest Hotline:** 643-PEST

## Management Area Map



### Tidbit

The Coqui is a general nocturnal predator which can consume, as a population, 114,000 invertebrates each night per hectare.



The difference between Greenhouse and Coqui frogs:

Characteristics	<b>GREENHOUSE FROG</b> <i>E. planirostris</i>	<b>PLEASE REPORT!</b> <b>COQUI FROG</b> <i>E. coqui</i> <b>PLEASE REPORT!</b>
<b>Body shape and size</b> (maximum adult length)	<ul style="list-style-type: none"> <li>&lt; 1 inch long</li> <li>Narrower body shape</li> </ul> <p>(not reportable)</p> 	<ul style="list-style-type: none"> <li>Slightly &gt; 1 inch long; adults about 1 1/2 times larger than greenhouse frogs</li> <li>Rounder body shape</li> </ul> 
<b>Color</b>	<ul style="list-style-type: none"> <li>Usually copper colored, mottled with black spots</li> <li>No mid-dorsal line (along back from nose to tail)</li> <li>Warty textured skin</li> </ul> 	<ul style="list-style-type: none"> <li>Greater variation in color, from light yellow to dark brown</li> <li>May be mottled with black spots</li> <li>Mid-dorsal line (stripe along back) may or may not be visible</li> </ul> 
<b>Shape of snout</b> (head portion in front of eyes)	<ul style="list-style-type: none"> <li>Narrower snout</li> </ul> 	<ul style="list-style-type: none"> <li>Broader, bow-shaped snout</li> </ul> 
<b>Toes and toe pads</b>	<ul style="list-style-type: none"> <li>Claw-like toes; toe pads not distinct</li> </ul> 	<ul style="list-style-type: none"> <li>Suction cup-like toe pads</li> </ul> 
<b>Male calling sounds</b>	<ul style="list-style-type: none"> <li>Soft, bird-like or cricket-like chirping</li> </ul>	<ul style="list-style-type: none"> <li>Loud two-tone call, "ko-kee"</li> </ul>
<b>Habitat</b>	<ul style="list-style-type: none"> <li>Exclusively on ground level</li> </ul>	<ul style="list-style-type: none"> <li>From ground level to tops of trees</li> </ul>
<b>Quarantine status</b>	<ul style="list-style-type: none"> <li>Not a quarantine pest</li> </ul>	<ul style="list-style-type: none"> <li>Only an inter-island quarantine pest</li> </ul>

This poster can be found at [http://www2.ctahr.hawaii.edu/oc/freepubs/pdf/coqui\\_id.pdf](http://www2.ctahr.hawaii.edu/oc/freepubs/pdf/coqui_id.pdf)

Work Notification Policy:

<http://www.hear.org/kisc/pdfs/200704coquiworknotificationpolicy.pdf>