



Coqui News

Online at www.hear.org/kisc/coqui_news

Kauai Invasive Species Committee

Work Notification

October 19-23

Work update at Lawai infestation site

Upcoming control work is scheduled to continue the week of **October 19, 2009**. Crews will be working during daylight hours and up until around 9:30 pm.

The field crew work is scheduled for **Monday and Tuesday**.

This past week the crew applied citric acid to section 4, 18, and 19.

Survey at the site lead to one hand-captured frog and no other calling frogs were heard.

This week herbicide is scheduled to be applied in section 3, 5, and 6. Citric acid is scheduled to be applied in sections 4, 10, 20, 21 and wherever any calling frogs are heard.

Thanks go out to the **Kauai Coqui Frog Working Group members who collaborate and assist with this project:** Hawaii Department of Agriculture, College of Tropical Agriculture and Human Resources, DLNR-Division of Forestry and Wildlife, County of Kauai, Garden Island RC&D, Kukui ula Development, A&B Properties, and Lawai Highland neighbors.



Male Coqui Frog

Help keep Kaua'i Coqui-Free!
Report coqui frogs!
643-PEST

POSTED:

Friday, October 16, 2009

In this issue:

| | |
|--|---|
| <i>Work Update</i> | 1 |
| <i>Management Area Map</i> | 1 |
| <i>Contact Phone</i> | 1 |
| <i>Tidbit</i> | 1 |
| <i>A comparison between greenhouse frogs and coqui</i> | 2 |
| <i>Notification policy link</i> | 2 |

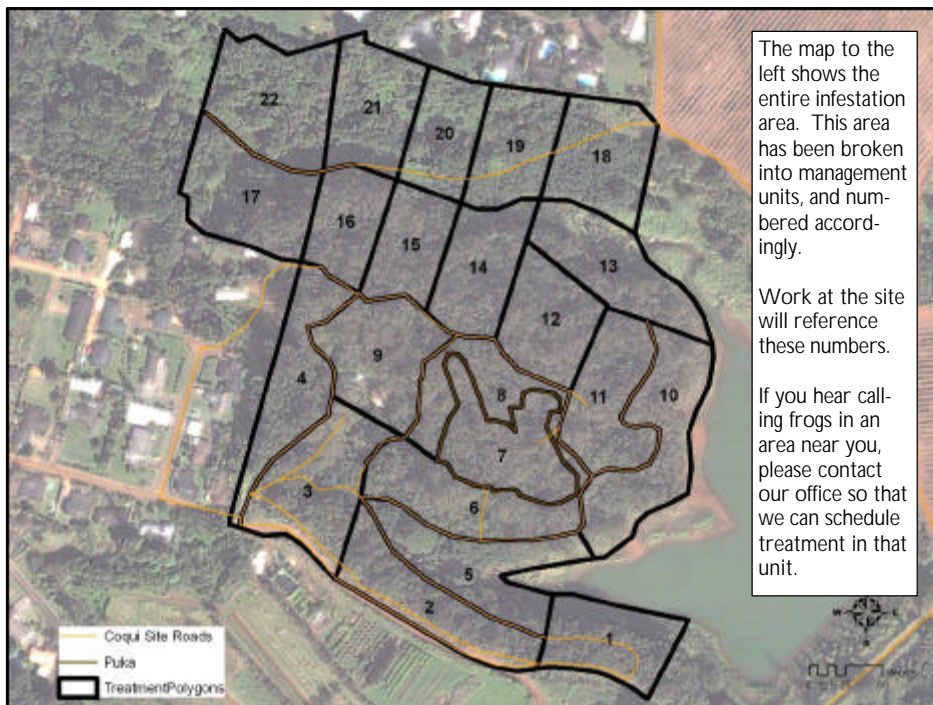
Want more info?

www.hear.org

Contact Phone Numbers:

- **KISC:** 821-1490
(from 7:00 am to 4:00 pm)
- **Crew Supervisor:**
651-8781
- **Hawaii Department of Agriculture:** 274-3069
- **Pest Hotline:** 643-PEST

Management Area Map



Tidbit

The golden poison arrow frog of Columbia has a skin secretion that is so deadly it can not be handled by bare hands. Native Americans used the poison to coat their hunting arrows. Just 0.2 micrograms of his poison in your bloodstream would kill you.



The difference between Greenhouse and Coqui frogs:

| Characteristics | GREENHOUSE FROG <i>E. planirostris</i> | COQUI FROG <i>E. coqui</i> |
|--|---|---|
| Body shape and size (maximum adult length) | <ul style="list-style-type: none"> < 1 inch long Narrower body shape <p>(not reportable)</p>  | <p>PLEASE REPORT!</p> <ul style="list-style-type: none"> Slightly > 1 inch long; adults about 1 1/2 times larger than greenhouse frogs Rounder body shape  <p>PLEASE REPORT!</p> |
| Color | <ul style="list-style-type: none"> Usually copper colored, mottled with black spots No mid-dorsal line (along back from nose to tail) Warty textured skin  | <ul style="list-style-type: none"> Greater variation in color, from light yellow to dark brown May be mottled with black spots Mid-dorsal line (stripe along back) may or may not be visible  |
| Shape of snout (head portion in front of eyes) | <ul style="list-style-type: none"> Narrower snout  | <ul style="list-style-type: none"> Broader, bow-shaped snout  |
| Toes and toe pads | <ul style="list-style-type: none"> Claw-like toes; toe pads not distinct  | <ul style="list-style-type: none"> Suction cup-like toe pads  |
| Male calling sounds | <ul style="list-style-type: none"> Soft, bird-like or cricket-like chirping | <ul style="list-style-type: none"> Loud two-tone call, "ko-kee" |
| Habitat | <ul style="list-style-type: none"> Exclusively on ground level | <ul style="list-style-type: none"> From ground level to tops of trees |
| Quarantine status | <ul style="list-style-type: none"> Not a quarantine pest | <ul style="list-style-type: none"> Only an inter-island quarantine pest |

This poster can be found at http://www2.ctahr.hawaii.edu/oc/freepubs/pdf/coqui_id.pdf

Work Notification Policy:

<http://www.hear.org/kisc/pdfs/200704coquiworknotificationpolicy.pdf>