



Coqui News

Online at www.hear.org/kisc/coqui_news

Kauai Invasive Species Committee

Work Notification

September 21-25

Work update at Lawai infestation site

Upcoming control work is scheduled to continue the week of September 18, 2009. Crews will be working during daylight hours and up until around 9:30 pm.

The field crew work is scheduled for Monday and Tuesday of this week.

This last week the crew applied citric acid to sections 2, 11, 16, and 21.

This week citric acid is scheduled to be applied in section 4 and wherever any calling frogs are heard.

Herbicide is scheduled to be applied in sections 4, 5, and 6 to control vines, grasses and other weeds.

Thanks go out to the Kauai Coqui Frog Working Group members who collaborate and assist with this project: Hawaii Department of Agriculture, College of Tropical Agriculture and Human Resources, DLNR-Division of Forestry and Wildlife, County of Kauai, Garden Island RC&D, Kukui'ula Development, A&B Properties, and Lawai Highland neighbors.



Male coqui

Help keep Kaua'i Coqui-Free!

Report coqui frogs!

643-PEST

POSTED:

Friday, September 18, 2009

In this issue:

<i>Work Update</i>	1
<i>Management Area Map</i>	1
<i>Contact Phone</i>	1
<i>Tidbit</i>	1
<i>A comparison between greenhouse frogs and coqui</i>	2
<i>Notification policy link</i>	2

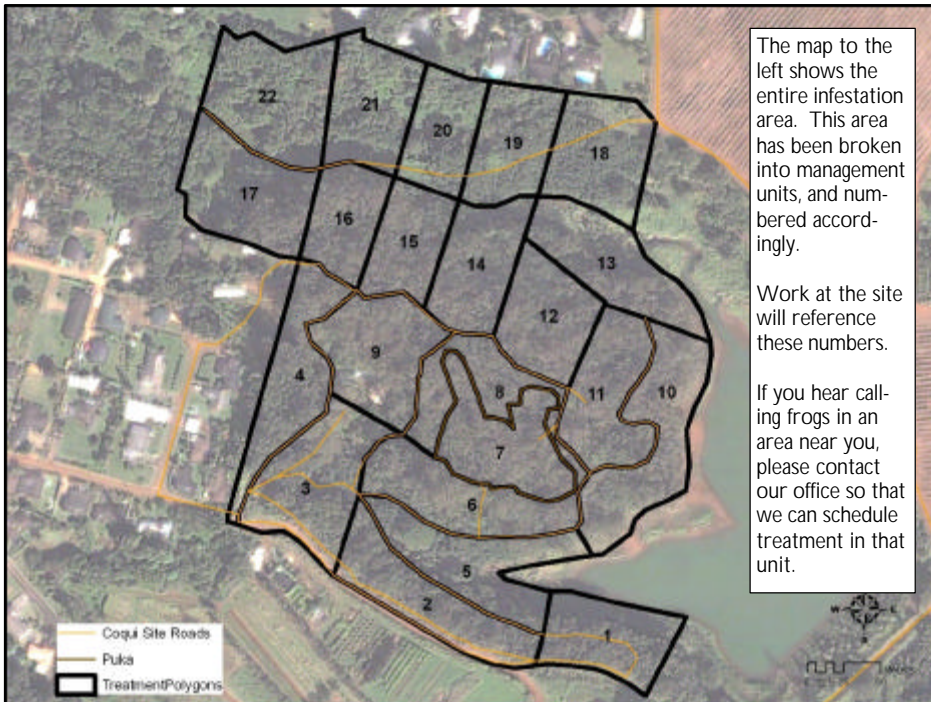
Want more info?

www.hear.org

Contact Phone Numbers:

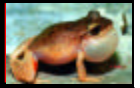
- **KISC:** 246-0684
(from 7:00 am to 4:00 pm)
- **Crew Supervisor:**
651-8781
- **Hawaii Department of Agriculture:** 274-3069
- **Pest Hotline:** 643-PEST

Management Area Map






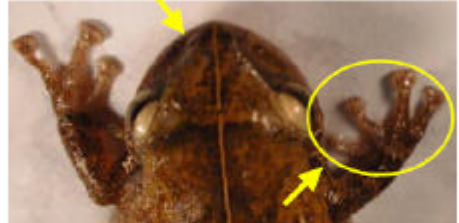
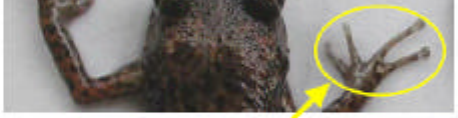



Tidbit

The golden dart frog is the most poisonous frog on earth and the skin of one frog could kill up to 1,000 people.



The difference between Greenhouse and Coqui frogs:

Characteristics	GREENHOUSE FROG <i>E. planirostris</i>	PLEASE REPORT! COQUI FROG <i>E. coqui</i> PLEASE REPORT!
Body shape and size (maximum adult length)	<ul style="list-style-type: none"> < 1 inch long Narrower body shape <p>(not reportable)</p> 	<ul style="list-style-type: none"> Slightly > 1 inch long; adults about 1 1/2 times larger than greenhouse frogs Rounder body shape 
Color	<ul style="list-style-type: none"> Usually copper colored, mottled with black spots No mid-dorsal line (along back from nose to tail) Warty textured skin 	<ul style="list-style-type: none"> Greater variation in color, from light yellow to dark brown May be mottled with black spots Mid-dorsal line (stripe along back) may or may not be visible 
Shape of snout (head portion in front of eyes)	<ul style="list-style-type: none"> Narrower snout 	<ul style="list-style-type: none"> Broader, bow-shaped snout 
Toes and toe pads	<ul style="list-style-type: none"> Claw-like toes; toe pads not distinct 	<ul style="list-style-type: none"> Suction cup-like toe pads 
Male calling sounds	<ul style="list-style-type: none"> Soft, bird-like or cricket-like chirping 	<ul style="list-style-type: none"> Loud two-tone call, "ko-kee"
Habitat	<ul style="list-style-type: none"> Exclusively on ground level 	<ul style="list-style-type: none"> From ground level to tops of trees
Quarantine status	<ul style="list-style-type: none"> Not a quarantine pest 	<ul style="list-style-type: none"> Only an inter-island quarantine pest

This poster can be found at http://www2.ctahr.hawaii.edu/oc/freepubs/pdf/coqui_id.pdf

Work Notification Policy:

<http://www.hear.org/kisc/pdfs/200704coquiworknotificationpolicy.pdf>