



# Coqui News

Online at [www.hear.org/kisc/coqui\\_news](http://www.hear.org/kisc/coqui_news)

Kauai Invasive Species Committee

Work Notification  
August 10 - 14

## Work update at Lawai infestation site

**Upcoming control work is scheduled to continue the week of August 10, 2009.** Crews will be working during daylight hours and up until around 9:30 pm.

**The field crew work is scheduled for Monday and Tuesday afternoon/evening and we may come out later in the week.**

This past week the crew applied herbicide in sections 2 and 3 to control weeds and tree re-sprouts.

They were also able to apply citric acid to section 4.

Survey at the site revealed 4 calling frogs: 2 frogs killed on private property west of section 4, one frog killed in section 13, and one frog heard in section 9

but not found.

Work this week will include applying herbicide in sections 5, 6, and 10 as well as spraying citric acid in sections 9, 13, 17, and wherever any calling frogs are heard.

**Thanks go out to the Kauai Coqui Frog Working Group members who collaborate and assist with this project:** Hawaii Department of Agriculture, College of Tropical Agriculture and Human Resources, DLNR-Division of Forestry and Wildlife, County of Kauai, Garden Island RC&D, Kukui'ula Development, A&B Properties, and Lawai Highland neighbors.



Variation in color of male coqui frogs

Help keep Kaua'i Coqui-Free!

**Report coqui frogs!**

[643-PEST](http://www.hear.org/kisc/643-PEST)

POSTED:  
Friday, August 7, 2009

### In this issue:

<i>Work Update</i>	1
<i>Management Area Map</i>	1
<i>Contact Phone</i>	1
<i>Tidbit</i>	1
<i>A comparison between greenhouse frogs and coqui</i>	2
<i>Notification policy link</i>	2

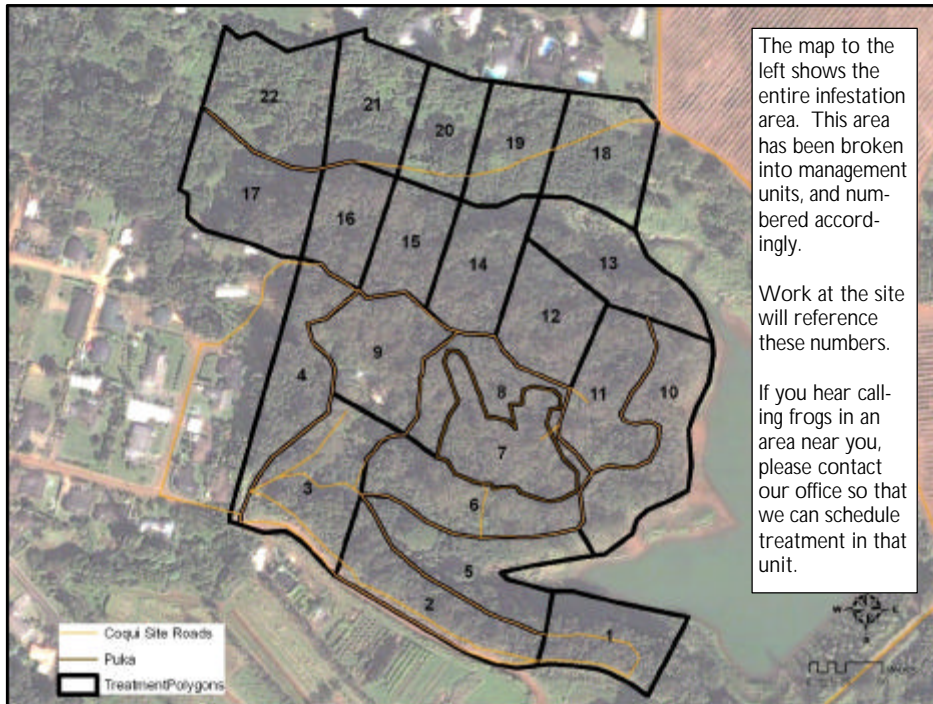
Want more info?

[www.hear.org](http://www.hear.org)

### Contact Phone Numbers:

- **KISC:** 246-0684  
from 7:00 am to 4:00 pm)
- **Crew Supervisor:**  
651-8781
- **Hawaii Department of Agriculture:** 274-3069
- **Pest Hotline:** 643-PEST

## Management Area Map



### Tidbit

The Flying Frog (*Polypedates dennysi*) lives in the forests of Southeast Asia. It doesn't really fly, it actually jumps from tree to tree. The Flying Frog has large suction cups on its toes that enable it to stick to the bark and leaves of the tropical trees, and webbed feet that act as parachutes as it falls from tree to tree.



The difference between Greenhouse and Coqui frogs:

Characteristics	<b>GREENHOUSE FROG</b> <i>E. planirostris</i>	<b>PLEASE REPORT!</b> <b>COQUI FROG</b> <i>E. coqui</i> <b>PLEASE REPORT!</b>
<b>Body shape and size</b> (maximum adult length)	<ul style="list-style-type: none"> <li>&lt; 1 inch long</li> <li>Narrower body shape</li> </ul> <p>(not reportable)</p> 	<ul style="list-style-type: none"> <li>Slightly &gt; 1 inch long; adults about 1 1/2 times larger than greenhouse frogs</li> <li>Rounder body shape</li> </ul> 
<b>Color</b>	<ul style="list-style-type: none"> <li>Usually copper colored, mottled with black spots</li> <li>No mid-dorsal line (along back from nose to tail)</li> <li>Warty textured skin</li> </ul> 	<ul style="list-style-type: none"> <li>Greater variation in color, from light yellow to dark brown</li> <li>May be mottled with black spots</li> <li>Mid-dorsal line (stripe along back) may or may not be visible</li> </ul> 
<b>Shape of snout</b> (head portion in front of eyes)	<ul style="list-style-type: none"> <li>Narrower snout</li> </ul> 	<ul style="list-style-type: none"> <li>Broader, bow-shaped snout</li> </ul> 
<b>Toes and toe pads</b>	<ul style="list-style-type: none"> <li>Claw-like toes; toe pads not distinct</li> </ul> 	<ul style="list-style-type: none"> <li>Suction cup-like toe pads</li> </ul> 
<b>Male calling sounds</b>	<ul style="list-style-type: none"> <li>Soft, bird-like or cricket-like chirping</li> </ul>	<ul style="list-style-type: none"> <li>Loud two-tone call, "ko-kee"</li> </ul>
<b>Habitat</b>	<ul style="list-style-type: none"> <li>Exclusively on ground level</li> </ul>	<ul style="list-style-type: none"> <li>From ground level to tops of trees</li> </ul>
<b>Quarantine status</b>	<ul style="list-style-type: none"> <li>Not a quarantine pest</li> </ul>	<ul style="list-style-type: none"> <li>Only an inter-island quarantine pest</li> </ul>

This poster can be found at [http://www2.ctahr.hawaii.edu/oc/freepubs/pdf/coqui\\_id.pdf](http://www2.ctahr.hawaii.edu/oc/freepubs/pdf/coqui_id.pdf)

Work Notification Policy:

<http://www.hear.org/kisc/pdfs/200704coquiworknotificationpolicy.pdf>