



# Coqui News

Online at [www.hear.org/kisc/coqui\\_news](http://www.hear.org/kisc/coqui_news)

Kauai Invasive Species Committee

Work Notification

July 13 - 17

## Work update at Lawai infestation site

**Upcoming control work is scheduled to continue the week of July 13, 2009.** Crews will be working during daylight hours and up until around 9:30 pm.

**The field crew work is scheduled for Tuesday and Wednesday of this week.**

This past week the crew applied citric acid in sections 4, 16, and 17.

Herbicide control work on weeds and vegetation was conducted in sections 3, 5, 6, 8, 10, 11, and 13.

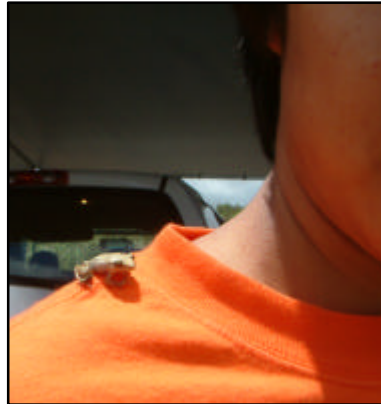
Survey at the site on Tuesday, July 7 heard one calling frog in section 4 (captured), and 3 on private property west of section 4 (two captured). Survey on Wednesday heard no

calling frogs.

Work this week is scheduled to include applying citric acid in sections 4, 17, and wherever any calling frogs are heard.

Herbicide is scheduled to be applied in sections 14-16, and 18-22.

**Thanks go out to the Kauai Coqui Frog Working Group members who collaborate and assist with this project:** Hawaii Department of Agriculture, College of Tropical Agriculture and Human Resources, DLNR-Division of Forestry and Wildlife, County of Kauai, Garden Island RC&D, Kukui'ula Development, A&B Properties, and Lawai Highland neighbors.



A coqui frog hitching a ride

Help keep Kaua'i Coqui-Free!

**Report coqui frogs!**

[643-PEST](http://643-PEST)

POSTED:

Friday, July 10, 2009

### In this issue:

<i>Work Update</i>	1
<i>Management Area Map</i>	1
<i>Contact Phone</i>	1
<i>Tidbit</i>	1
<i>A comparison between greenhouse frogs and coqui</i>	2
<i>Notification policy link</i>	2

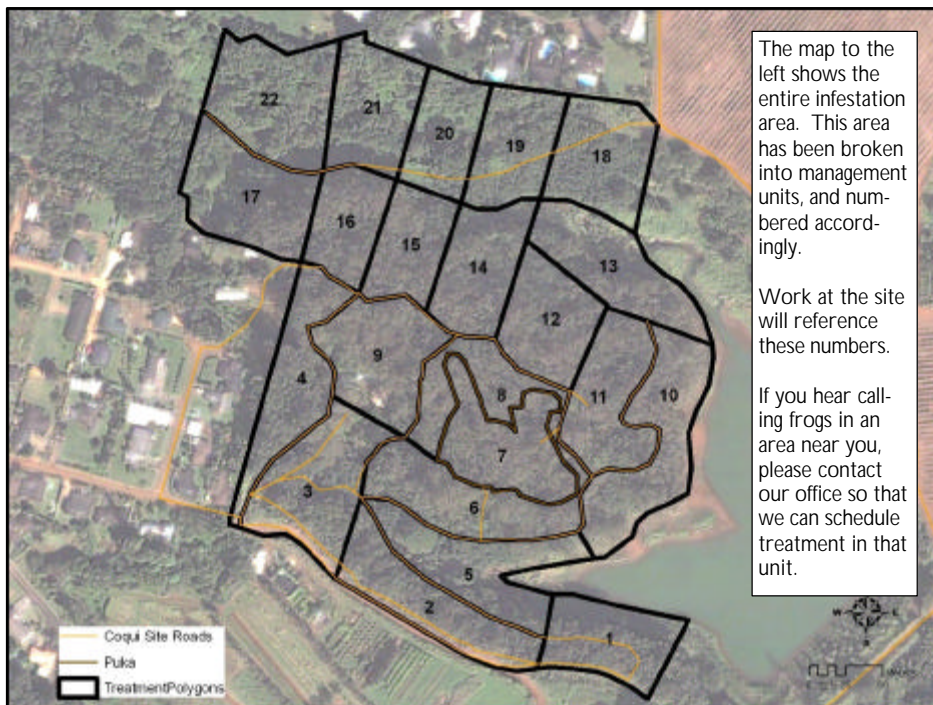
Want more info?

[www.hear.org](http://www.hear.org)

### Contact Phone Numbers:

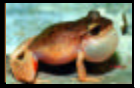
- **KISC:** 246-0684  
(from 7:00 am to 4:00 pm)
- **Crew Supervisor:**  
651-8781
- **Hawaii Department of Agriculture:** 274-3069
- **Pest Hotline:** 643-PEST

## Management Area Map



### Tidbit

The largest, saggiest-skinned aquatic frog in the world is found in Lake Titicaca in South America, 3,815m above sea level and is called *Telmatobius culeus*. It spends most of its life under water and rarely surfaces to breathe. It breathes through its skin which is highly folded to nearly double the area available for breathing. Local people use the frog as rain makers and they believe their juice has healing powers. Both uses have seen the decline in this interesting species.



The difference between Greenhouse and Coqui frogs:

Characteristics	<b>GREENHOUSE FROG</b> <i>E. planirostris</i>	<b>COQUI FROG</b> <i>E. coqui</i>
<b>Body shape and size</b> (maximum adult length)	<ul style="list-style-type: none"> <li>&lt; 1 inch long</li> <li>Narrower body shape</li> </ul> <p style="color: red; font-style: italic;">(not reportable)</p> 	<p style="color: red; font-style: italic;">PLEASE REPORT!</p> <ul style="list-style-type: none"> <li>Slightly &gt; 1 inch long; adults about 1 1/2 times larger than greenhouse frogs</li> <li>Rounder body shape</li> </ul>  <p style="color: red; font-style: italic;">PLEASE REPORT!</p>
<b>Color</b>	<ul style="list-style-type: none"> <li>Usually copper colored, mottled with black spots</li> <li>No mid-dorsal line (along back from nose to tail)</li> <li>Warty textured skin</li> </ul> 	<ul style="list-style-type: none"> <li>Greater variation in color, from light yellow to dark brown</li> <li>May be mottled with black spots</li> <li>Mid-dorsal line (stripe along back) may or may not be visible</li> </ul> 
<b>Shape of snout</b> (head portion in front of eyes)	<ul style="list-style-type: none"> <li>Narrower snout</li> </ul> 	<ul style="list-style-type: none"> <li>Broader, bow-shaped snout</li> </ul> 
<b>Toes and toe pads</b>	<ul style="list-style-type: none"> <li>Claw-like toes; toe pads not distinct</li> </ul> 	<ul style="list-style-type: none"> <li>Suction cup-like toe pads</li> </ul> 
<b>Male calling sounds</b>	<ul style="list-style-type: none"> <li>Soft, bird-like or cricket-like chirping</li> </ul>	<ul style="list-style-type: none"> <li>Loud two-tone call, "ko-kee"</li> </ul>
<b>Habitat</b>	<ul style="list-style-type: none"> <li>Exclusively on ground level</li> </ul>	<ul style="list-style-type: none"> <li>From ground level to tops of trees</li> </ul>
<b>Quarantine status</b>	<ul style="list-style-type: none"> <li>Not a quarantine pest</li> </ul>	<ul style="list-style-type: none"> <li>Only an inter-island quarantine pest</li> </ul>

This poster can be found at [http://www2.ctahr.hawaii.edu/oc/freepubs/pdf/coqui\\_id.pdf](http://www2.ctahr.hawaii.edu/oc/freepubs/pdf/coqui_id.pdf)

Work Notification Policy:

<http://www.hear.org/kisc/pdfs/200704coquiworknotificationpolicy.pdf>