



# Coqui News

Online at [www.hear.org/kisc/coqui\\_news](http://www.hear.org/kisc/coqui_news)

Kauai Invasive Species Committee

Work Notification

May 25-29

## Work update at Lawai infestation site

**Upcoming control work is scheduled to continue the week of May 25, 2009.** Crews will be working during daylight hours and up until around 9:30 pm.

**Due to the upcoming holiday the field crew work is scheduled for Tuesday and Wednesday.**

This past week citric acid was applied as a ground drench in section 16.

Also, herbicide was applied in sections 2, 3, and 5, and sections 13-22 to control vegetation.

No calling frogs were heard while the crew was at the infestation site.

This week citric acid is scheduled to be applied in sec-

tion 4, 9, and 17 and wherever any calling frogs are heard.

Herbicide is scheduled to be applied in sections 7, 14, and 15 to maintain unsuitable habitat for the frogs.

**Thanks go out to the Kauai Coqui Frog Working Group members who collaborate and assist with this project:** Hawaii Department of Agriculture, College of Tropical Agriculture and Human Resources, DLNR-Division of Forestry and Wildlife, County of Kauai, Garden Island RC&D, Kukui'ula Development, A&B Properties, and Lawai Highland neighbors.



Memorial Day: May 25, 2009

Help keep Kaua'i coqui-free!

Report coqui frogs!

[643-PEST](tel:643-PEST)

POSTED:

Friday, May 22, 2009

### In this issue:

<i>Work Update</i>	1
<i>Management Area Map</i>	1
<i>Contact Phone</i>	1
<i>Tidbit</i>	1
<i>A comparison between greenhouse frogs and coqui</i>	2
<i>Notification policy link</i>	2

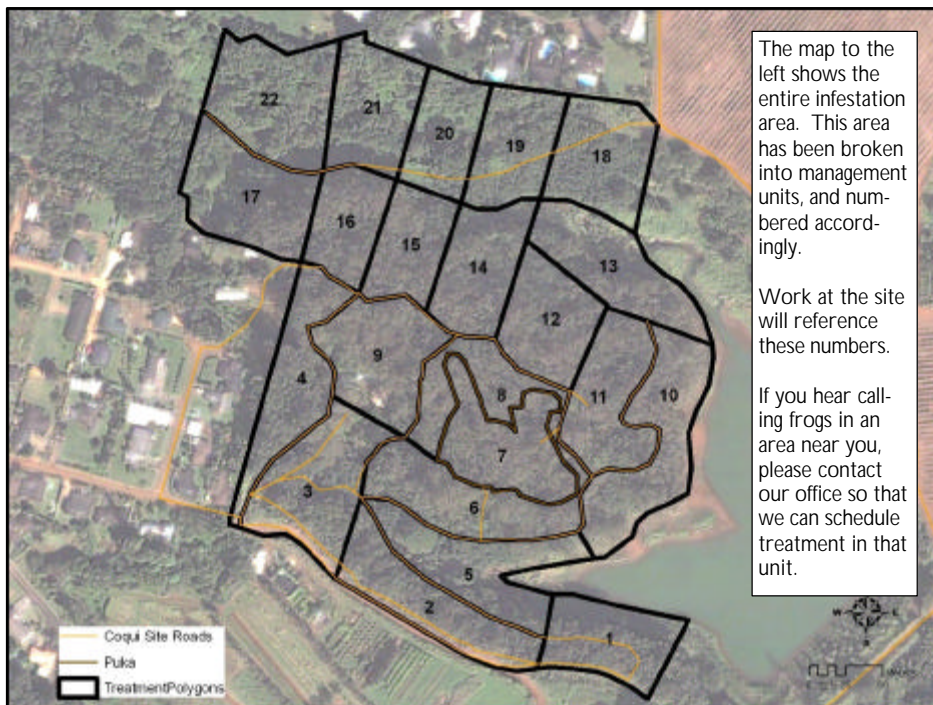
Want more info?

[www.hear.org](http://www.hear.org)

### Contact Phone Numbers:

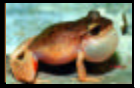
- **KISC:** 246-0684  
(from 7:00 am to 4:00 pm)
- **Crew Supervisor:**  
651-8781
- **Hawaii Department of Agriculture:** 274-3069
- **Pest Hotline:** 643-PEST

## Management Area Map





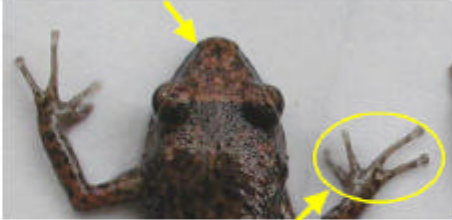
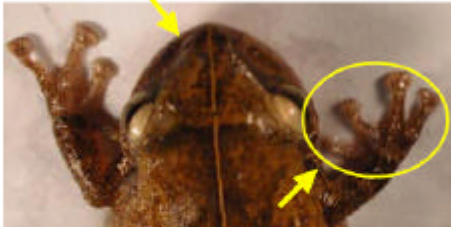
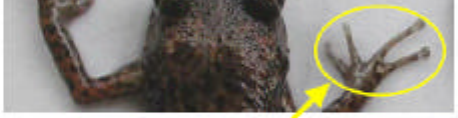
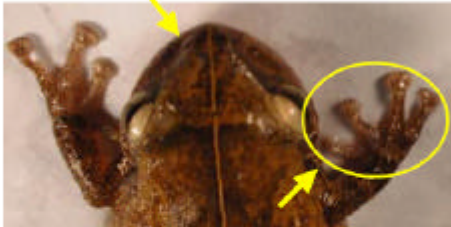


### Tidbit

Waterloo, N.Y. is considered the birthplace of this Memorial Day holiday because the people of Waterloo were the first people to proclaim a day on May 5, 1866 to honor the soldiers who died in the Civil War. They closed their businesses and placed flowers and flags on the graves of their soldiers. Flags were flown at half-mast.



The difference between Greenhouse and Coqui frogs:

Characteristics	<b>GREENHOUSE FROG</b> <i>E. planirostris</i>	<b>COQUI FROG</b> <i>E. coqui</i>
<b>Body shape and size</b> (maximum adult length)	<ul style="list-style-type: none"> <li>&lt; 1 inch long</li> <li>Narrower body shape</li> </ul> <p>(not reportable)</p> 	<p>PLEASE REPORT!</p> <ul style="list-style-type: none"> <li>Slightly &gt; 1 inch long; adults about 1 1/2 times larger than greenhouse frogs</li> <li>Rounder body shape</li> </ul>  <p>PLEASE REPORT!</p>
<b>Color</b>	<ul style="list-style-type: none"> <li>Usually copper colored, mottled with black spots</li> <li>No mid-dorsal line (along back from nose to tail)</li> <li>Warty textured skin</li> </ul> 	<ul style="list-style-type: none"> <li>Greater variation in color, from light yellow to dark brown</li> <li>May be mottled with black spots</li> <li>Mid-dorsal line (stripe along back) may or may not be visible</li> </ul> 
<b>Shape of snout</b> (head portion in front of eyes)	<ul style="list-style-type: none"> <li>Narrower snout</li> </ul> 	<ul style="list-style-type: none"> <li>Broader, bow-shaped snout</li> </ul> 
<b>Toes and toe pads</b>	<ul style="list-style-type: none"> <li>Claw-like toes; toe pads not distinct</li> </ul> 	<ul style="list-style-type: none"> <li>Suction cup-like toe pads</li> </ul> 
<b>Male calling sounds</b>	<ul style="list-style-type: none"> <li>Soft, bird-like or cricket-like chirping</li> </ul>	<ul style="list-style-type: none"> <li>Loud two-tone call, "ko-kee"</li> </ul>
<b>Habitat</b>	<ul style="list-style-type: none"> <li>Exclusively on ground level</li> </ul>	<ul style="list-style-type: none"> <li>From ground level to tops of trees</li> </ul>
<b>Quarantine status</b>	<ul style="list-style-type: none"> <li>Not a quarantine pest</li> </ul>	<ul style="list-style-type: none"> <li>Only an inter-island quarantine pest</li> </ul>

This poster can be found at [http://www2.ctahr.hawaii.edu/oc/freepubs/pdf/coqui\\_id.pdf](http://www2.ctahr.hawaii.edu/oc/freepubs/pdf/coqui_id.pdf)

Work Notification Policy:

<http://www.hear.org/kisc/pdfs/200704coquiworknotificationpolicy.pdf>