



Coqui News

Online at www.hear.org/kisc/coqui_news

Kauai Invasive Species Committee

Work Notification
April 13-17

Work update at Lawai infestation site

Upcoming control work is scheduled to continue the week of April 13, 2009. Crews will be working during daylight hours and up until around 9:30 pm.

Field crew work is scheduled for Monday, and Tuesday.

This past week, the crew applied herbicide in sections 17-22 for habitat control.

Survey at the site heard quite a few calling frogs; 3 mature frogs were caught and killed in section 4, and frogs were also heard just west of section 4 on private properties. One frog was also heard in section 6, but the crew could not locate it.

This week the crew will

apply citric acid to sections 4, 6, and 9 as well as in the ditch-line west of section 4 on some private properties.

Herbicide is scheduled to be applied in sections 2, 3, and 6.

Thanks go out to the Kauai Coqui Frog Working Group members who collaborate and assist with this project: Hawaii Department of Agriculture, College of Tropical Agriculture and Human Resources, DLNR-Division of Forestry and Wildlife, County of Kauai, Garden Island RC&D, Kukui'ula Development, A&B Properties, and Lawai Highland neighbors.



Crew finished spraying for the day

Help keep Kauai coqui-free!
Report coqui frogs!
[643-PEST](tel:643-PEST)

POSTED:
Thursday, April 9, 2009

In this issue:

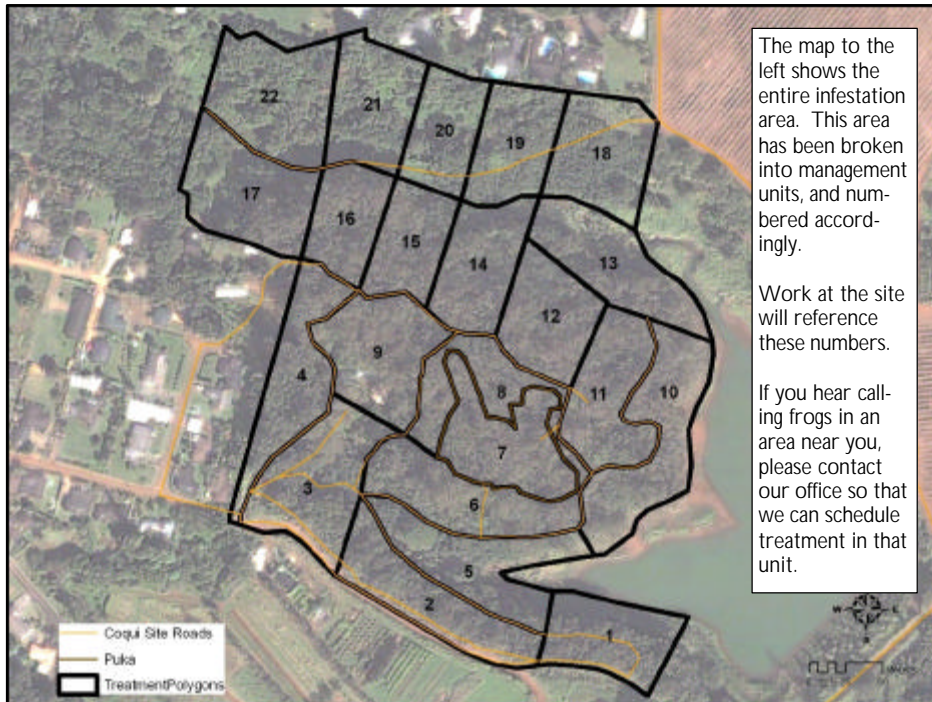
<i>Work Update</i>	1
<i>Management Area Map</i>	1
<i>Contact Phone</i>	1
<i>Tidbit</i>	1
<i>A comparison between greenhouse frogs and coqui</i>	2
<i>Notification policy link</i>	2

Want more info?
www.hear.org

Contact Phone Numbers:

- **KISC:** 246-0684
(from 7:00 am to 4:00 pm)
- **Crew Supervisor:**
651-8781
- **Hawaii Department of Agriculture:** 274-3069
- **Pest Hotline:** 643-PEST

Management Area Map






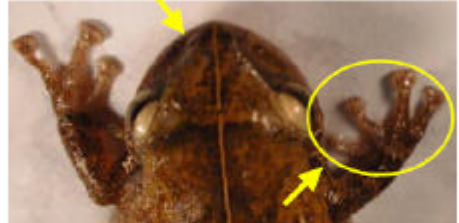
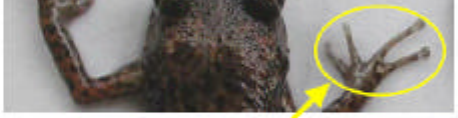



Tidbit

An estimated 6000-8000 frogs are transported to Melbourne annually in produce. These tropical frogs cannot survive in Victoria's cool climate nor can they be returned to their home state due to fears of spreading disease. These displaced frogs are cared for at the VFG's and ARC's Lost Frogs' Home, nursed back to health in quarantine and eventually placed into a caring home as a family pet.



The difference between Greenhouse and Coqui frogs:

Characteristics	GREENHOUSE FROG <i>E. planirostris</i>	PLEASE REPORT! COQUI FROG PLEASE REPORT! <i>E. coqui</i>
Body shape and size (maximum adult length)	<ul style="list-style-type: none"> < 1 inch long Narrower body shape <p>(not reportable)</p> 	<ul style="list-style-type: none"> Slightly > 1 inch long; adults about 1 1/2 times larger than greenhouse frogs Rounder body shape 
Color	<ul style="list-style-type: none"> Usually copper colored, mottled with black spots No mid-dorsal line (along back from nose to tail) Warty textured skin 	<ul style="list-style-type: none"> Greater variation in color, from light yellow to dark brown May be mottled with black spots Mid-dorsal line (stripe along back) may or may not be visible 
Shape of snout (head portion in front of eyes)	<ul style="list-style-type: none"> Narrower snout 	<ul style="list-style-type: none"> Broader, bow-shaped snout 
Toes and toe pads	<ul style="list-style-type: none"> Claw-like toes; toe pads not distinct 	<ul style="list-style-type: none"> Suction cup-like toe pads 
Male calling sounds	<ul style="list-style-type: none"> Soft, bird-like or cricket-like chirping 	<ul style="list-style-type: none"> Loud two-tone call, "ko-kee"
Habitat	<ul style="list-style-type: none"> Exclusively on ground level 	<ul style="list-style-type: none"> From ground level to tops of trees
Quarantine status	<ul style="list-style-type: none"> Not a quarantine pest 	<ul style="list-style-type: none"> Only an inter-island quarantine pest

This poster can be found at http://www2.ctahr.hawaii.edu/oc/freepubs/pdf/coqui_id.pdf

Work Notification Policy:

<http://www.hear.org/kisc/pdfs/200704coquiworknotificationpolicy.pdf>