



Coqui News

Online at www.hear.org/kisc/coqui_news

Kauai Invasive Species Committee

Work Notification
March 16-20

Work update at Lawai infestation site

Upcoming control work is scheduled to continue the week of March 16, 2009. Crews will be working during daylight hours and up until around 9:30 pm.

Field crew work is scheduled for Monday and Tuesday.

Conditions at the site this past week were wet, windy, and cold. Winds were strong, about 20 - 25 mph, with stronger gusts, making an unsafe environment under towering eucalyptus trees!

Crews were only able to survey and they heard one calling frog south of section 17 on private property. They were unable to locate it for capture.

This coming week, work will

continue with herbicide work in sections 3, 5, 6, and 10 to control weedy vegetation and tree re-growth.

Citric acid is scheduled to be applied sections 4, 16, 17, 18, 19, and 20 and wherever any calling frogs are heard.

Please continue to report any calling frogs so that they can be responded to quickly. Calling frogs may occur on nights when crews are not working and it is important to address them immediately.



Coqui perched on a bromeliad

Help keep Kaua'i coqui-free!

Report coqui frogs!

643-PEST



POSTED:
Friday, March 13, 2009

In this issue:

<i>Work Update</i>	1
<i>Management Area Map</i>	1
<i>Contact Phone</i>	1
<i>Tidbit</i>	1
<i>A comparison between greenhouse frogs and coqui</i>	2
<i>Notification policy link</i>	2

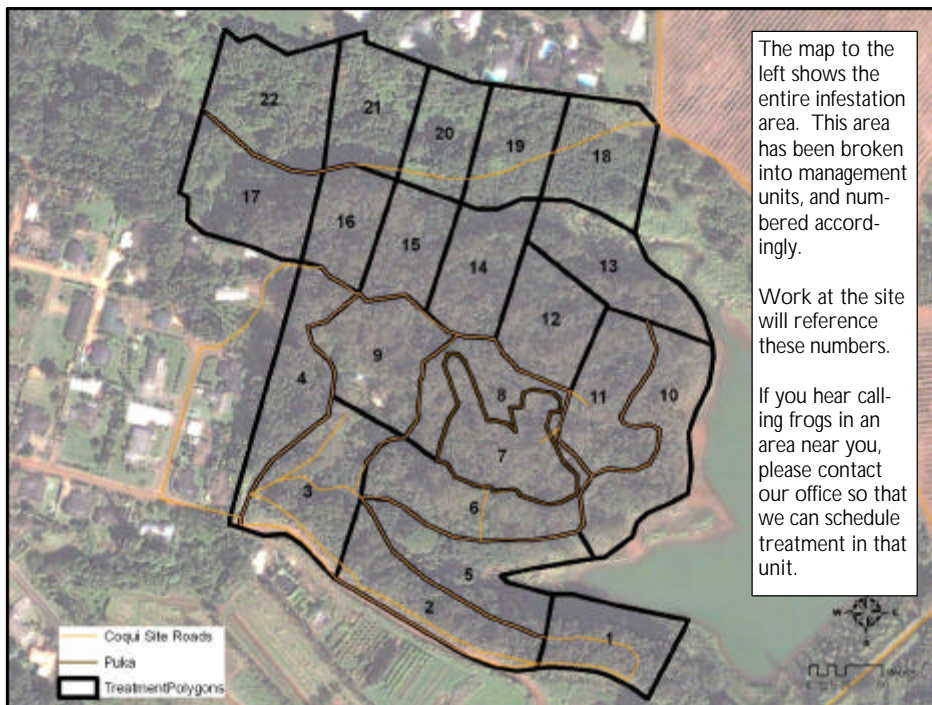
Want more info?

www.hear.org

Contact Phone Numbers:

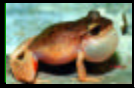
- **KISC:** 246-0684
(from 7:00 am to 4:00 pm)
- **Crew Supervisor:**
651-8781
- **Hawaii Department of Agriculture:** 274-3069
- **Pest Hotline:** 643-PEST

Management Area Map






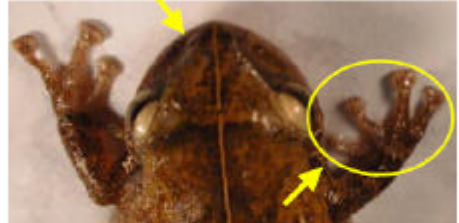
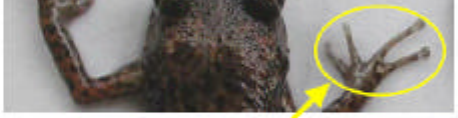



Tidbit

The Surinam toad, (family Pipidae), are bizarre creatures that are well known for their weird brooding habits. They mate in the water, and as the eggs are released, the male fertilizes them and presses them to the back of the female. In the next several hours, the skin grows around the eggs to enclose them in a cyst with a horny lid. After about 80 days, the eggs develop, and the young emerge out of the back of this toad as a bunch of tiny froglets!



The difference between Greenhouse and Coqui frogs:

Characteristics	GREENHOUSE FROG <i>E. planirostris</i>	COQUI FROG <i>E. coqui</i>
Body shape and size (maximum adult length)	<ul style="list-style-type: none"> < 1 inch long Narrower body shape <p>(not reportable)</p> 	<p>PLEASE REPORT!</p> <ul style="list-style-type: none"> Slightly > 1 inch long; adults about 1 1/2 times larger than greenhouse frogs Rounder body shape  <p>PLEASE REPORT!</p>
Color	<ul style="list-style-type: none"> Usually copper colored, mottled with black spots No mid-dorsal line (along back from nose to tail) Warty textured skin 	<ul style="list-style-type: none"> Greater variation in color, from light yellow to dark brown May be mottled with black spots Mid-dorsal line (stripe along back) may or may not be visible 
Shape of snout (head portion in front of eyes)	<ul style="list-style-type: none"> Narrower snout 	<ul style="list-style-type: none"> Broader, bow-shaped snout 
Toes and toe pads	<ul style="list-style-type: none"> Claw-like toes; toe pads not distinct 	<ul style="list-style-type: none"> Suction cup-like toe pads 
Male calling sounds	<ul style="list-style-type: none"> Soft, bird-like or cricket-like chirping 	<ul style="list-style-type: none"> Loud two-tone call, "ko-kee"
Habitat	<ul style="list-style-type: none"> Exclusively on ground level 	<ul style="list-style-type: none"> From ground level to tops of trees
Quarantine status	<ul style="list-style-type: none"> Not a quarantine pest 	<ul style="list-style-type: none"> Only an inter-island quarantine pest

This poster can be found at http://www2.ctahr.hawaii.edu/oc/freepubs/pdf/coqui_id.pdf

Work Notification Policy:

<http://www.hear.org/kisc/pdfs/200704coquiworknotificationpolicy.pdf>