



Coqui News

Online at www.hear.org/kisc/coqui_news

Kauai Invasive Species Committee

Work Notification
February 23-27

Work update at Lawai infestation site

Upcoming control work is scheduled to continue the week of February 23, 2009.

Crews will be working during daylight hours and up until around 9:30 pm.

Field crew work is scheduled for Monday and Tuesday.

This past week was very cold and wet. Crews were able to do some more vegetation clearing in and around section 4 with weed whackers.

Survey at the site heard only calling juvenile frogs west of section 4 on private property.

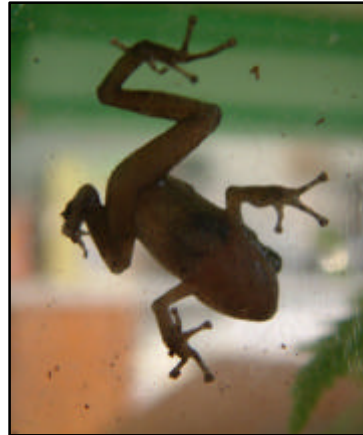
This week the crew will continue to clear vegetation in and around section 4.

Also, citric acid is scheduled to be applied as a ground

drench in sections 16, 17, 18, 19, and 20, and wherever any calling frogs are heard (weather permitting).

Herbicide to control vegetation will be applied in sections 3, 5, and 6.

Please continue to report calling coqui frogs so that they can be quickly addressed. Your help has been essential in making this project a success!



Coqui climbing glass



Help keep Kaua'i coqui-free!

Report coqui frogs!

643-PEST

POSTED:

Friday, February 20, 2009

In this issue:

<i>Work Update</i>	1
<i>Management Area Map</i>	1
<i>Contact Phone</i>	1
<i>Tidbit</i>	1
<i>A comparison between greenhouse frogs and coqui</i>	2
<i>Notification policy link</i>	2

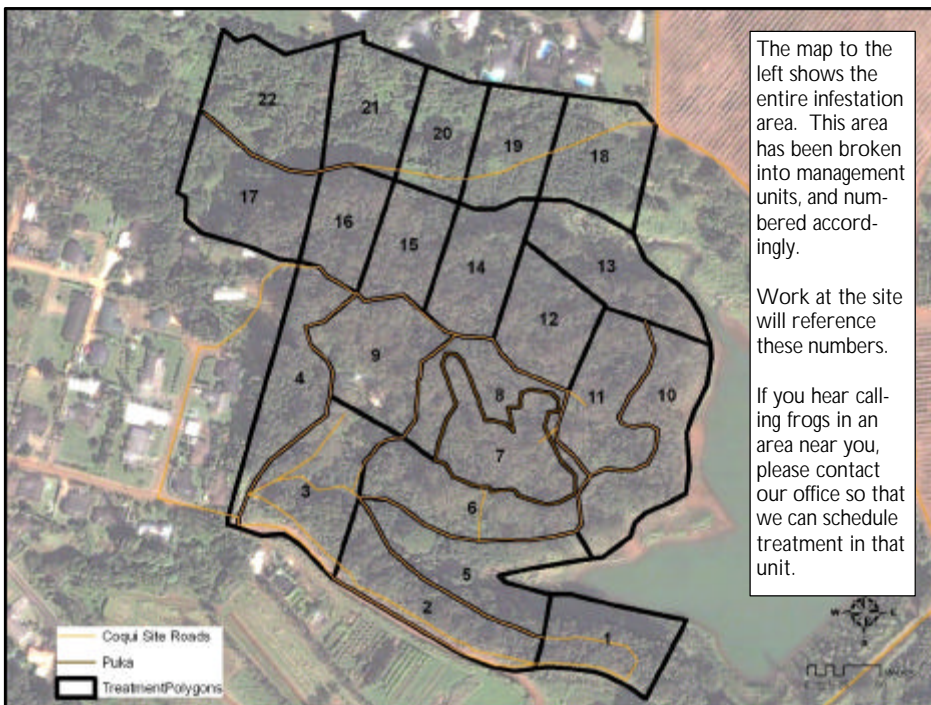
Want more info?

www.hear.org

Contact Phone Numbers:

- **KISC:** 246-0684
(from 7:00 am to 4:00 pm)
- **Crew Supervisor:**
651-8781
- **Hawaii Department of Agriculture:** 274-3069
- **Pest Hotline:** 643-PEST

Management Area Map



Tidbit

The Chilean Four-eyed frog has a pair of eyespot marks on its rear end. They are really big poisonous glands with spots on them, but it looks like eyes when you look at them from behind. The spots usually are covered by the thighs when the frog is sitting, but when it feels any threat, it will expose the "fake eye spots" and cause them to swell up a bit, which (hopefully for the frog) will fool the predator into thinking that he is bigger and meaner than he really is!



The difference between Greenhouse and Coqui frogs:

Characteristics	GREENHOUSE FROG <i>E. planirostris</i>	COQUI FROG <i>E. coqui</i>
Body shape and size (maximum adult length)	<ul style="list-style-type: none"> < 1 inch long Narrower body shape <p>(not reportable)</p> 	<p>PLEASE REPORT!</p> <ul style="list-style-type: none"> Slightly > 1 inch long; adults about 1 1/2 times larger than greenhouse frogs Rounder body shape  <p>PLEASE REPORT!</p>
Color	<ul style="list-style-type: none"> Usually copper colored, mottled with black spots No mid-dorsal line (along back from nose to tail) Warty textured skin 	<ul style="list-style-type: none"> Greater variation in color, from light yellow to dark brown May be mottled with black spots Mid-dorsal line (stripe along back) may or may not be visible 
Shape of snout (head portion in front of eyes)	<ul style="list-style-type: none"> Narrower snout 	<ul style="list-style-type: none"> Broader, bow-shaped snout 
Toes and toe pads	<ul style="list-style-type: none"> Claw-like toes; toe pads not distinct 	<ul style="list-style-type: none"> Suction cup-like toe pads 
Male calling sounds	<ul style="list-style-type: none"> Soft, bird-like or cricket-like chirping 	<ul style="list-style-type: none"> Loud two-tone call, "ko-kee"
Habitat	<ul style="list-style-type: none"> Exclusively on ground level 	<ul style="list-style-type: none"> From ground level to tops of trees
Quarantine status	<ul style="list-style-type: none"> Not a quarantine pest 	<ul style="list-style-type: none"> Only an inter-island quarantine pest

This poster can be found at http://www2.ctahr.hawaii.edu/oc/freepubs/pdf/coqui_id.pdf

Work Notification Policy:

<http://www.hear.org/kisc/pdfs/200704coquiworknotificationpolicy.pdf>