



Coqui News

Online at www.hear.org/kisc/coqui_news

Kauai Invasive Species Committee

Work Notification
February 16-20

Work update at Lawai infestation site

Upcoming control work is scheduled to continue the week of February 16, 2009.

Crews will be working during daylight hours and up until around 9:30 pm.

Field crew work is scheduled for Tuesday and Wednesday due to the President's Day holiday.

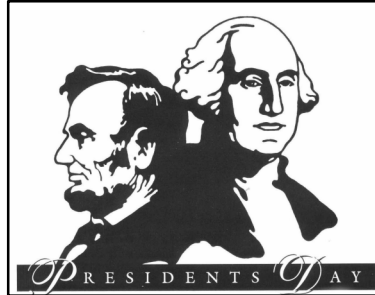
This past week, crews at the site worked on clearing and cleaning out vegetative debris from private property west of section 4 to make it less hospitable to coqui.

Herbicide was applied in sections 11, 12, 13, 14, 15, 16, 18, 19, and 20 to treat hau, strawberry guava, guinea grass, Job's tears, California grass and other weeds.

Citric acid was not applied this week due to a break in the water line supplying the infestation site.

This week, no herbicide is planned on being used.

Citric acid is scheduled to be applied as a ground drench in sections 4, 16, 17 and wherever any frogs are heard.



President's Day celebrated Monday, February 16

Help keep Kaua'i coqui-free!

Report coqui frogs!

[643-PEST](tel:643-PEST)



POSTED:

Friday, February 13, 2009

In this issue:

<i>Work Update</i>	1
<i>Management Area Map</i>	1
<i>Contact Phone</i>	1
<i>Tidbit</i>	1
<i>A comparison between greenhouse frogs and coqui</i>	2
<i>Notification policy link</i>	2

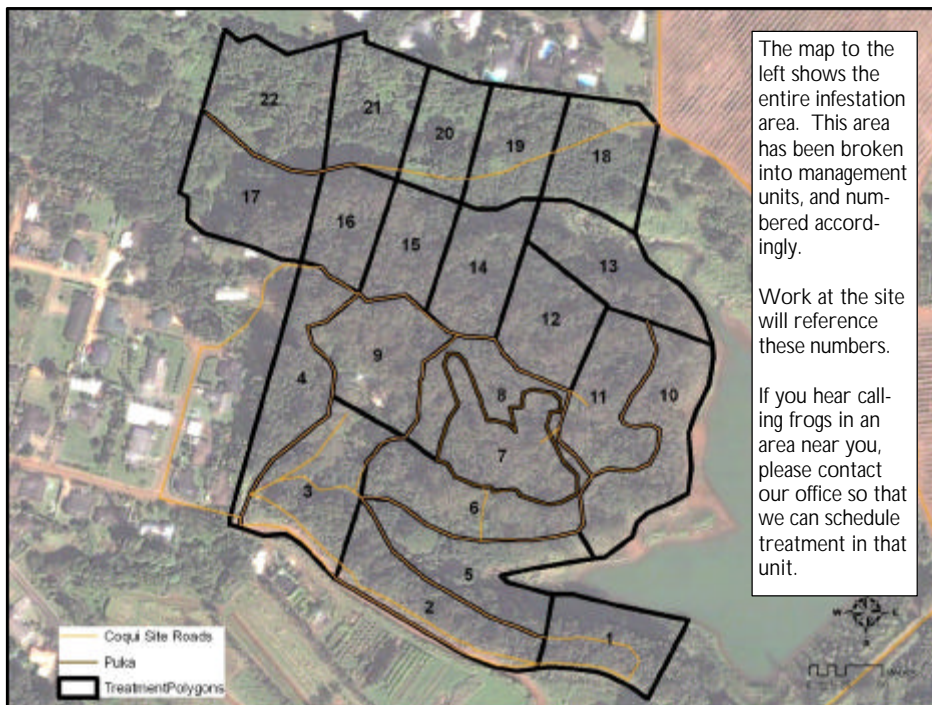
Want more info?

www.hear.org

Contact Phone Numbers:

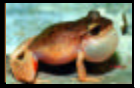
- **KISC:** 246-0684
(from 7:00 am to 4:00 pm)
- **Crew Supervisor:**
651-8781
- **Hawaii Department of Agriculture:** 274-3069
- **Pest Hotline:** 643-PEST

Management Area Map



Tidbit

There was an unusual frog in Australia that incubated its young in its stomach. However it has not been seen for the last 13 years.



The difference between Greenhouse and Coqui frogs:

Characteristics	GREENHOUSE FROG <i>E. planirostris</i>	PLEASE REPORT! COQUI FROG PLEASE REPORT! <i>E. coqui</i>
Body shape and size (maximum adult length)	<ul style="list-style-type: none"> < 1 inch long Narrower body shape <p>(not reportable)</p> 	<ul style="list-style-type: none"> Slightly > 1 inch long; adults about 1 1/2 times larger than greenhouse frogs Rounder body shape 
Color	<ul style="list-style-type: none"> Usually copper colored, mottled with black spots No mid-dorsal line (along back from nose to tail) Warty textured skin 	<ul style="list-style-type: none"> Greater variation in color, from light yellow to dark brown May be mottled with black spots Mid-dorsal line (stripe along back) may or may not be visible 
Shape of snout (head portion in front of eyes)	<ul style="list-style-type: none"> Narrower snout 	<ul style="list-style-type: none"> Broader, bow-shaped snout 
Toes and toe pads	<ul style="list-style-type: none"> Claw-like toes; toe pads not distinct 	<ul style="list-style-type: none"> Suction cup-like toe pads 
Male calling sounds	<ul style="list-style-type: none"> Soft, bird-like or cricket-like chirping 	<ul style="list-style-type: none"> Loud two-tone call, "ko-kee"
Habitat	<ul style="list-style-type: none"> Exclusively on ground level 	<ul style="list-style-type: none"> From ground level to tops of trees
Quarantine status	<ul style="list-style-type: none"> Not a quarantine pest 	<ul style="list-style-type: none"> Only an inter-island quarantine pest

This poster can be found at http://www2.ctahr.hawaii.edu/oc/freepubs/pdf/coqui_id.pdf

Work Notification Policy:

<http://www.hear.org/kisc/pdfs/200704coquiworknotificationpolicy.pdf>