



Coqui News

Online at www.hear.org/kisc/coqui_news

Kauai Invasive Species Committee

Work Notification
January 19-23

Work update at Lawai infestation site

Upcoming control work is scheduled to continue the week of January 19, 2009. Crews will be working during daylight hours and up until around 9:30 pm.

Field crew work is scheduled for Tuesday and Wednesday.

This past week was a rainy one on Kaua'i which made applications of herbicide and citric acid by the KISC crew impossible.

Survey throughout the site on both Monday and Tuesday revealed frogs only west of section 4.

A total of nine frogs were hand-captured in the ditch-line west of section 4 on private property. 8 of these frogs were

placed in the coqui habitat to lure female frogs. One was killed.

Due to the holiday on Monday, January 19, to celebrate Martin Luther King, Jr., the crew will be working at the site on Tuesday and Wednesday afternoon and evening.

Citric acid is scheduled to be applied in section 8 and 11 as well as any areas where calling frogs are heard.

Herbicide is scheduled to be applied in sections 2, 3, 4 and 18 to target pothos vines. The crew will also work on treating vegetation in sections 21 and 22 along the bottom of the drainage.



Martin Luther King, Junior



POSTED:

Friday, January 16, 2009

In this issue:

<i>Work Update</i>	1
<i>Management Area Map</i>	1
<i>Contact Phone</i>	1
<i>Tidbit</i>	1
<i>A comparison between greenhouse frogs and coqui</i>	2
<i>Notification policy link</i>	2

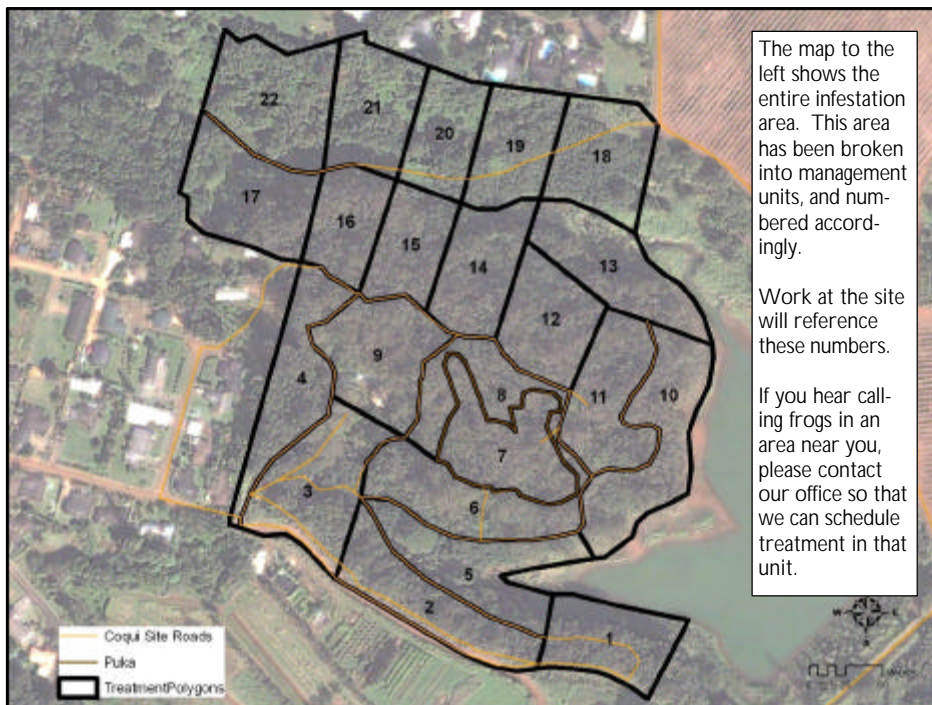
Want more info?

www.hear.org

Contact Phone Numbers:

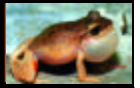
- **KISC:** 246-0684
(from 7:00 am to 4:00 pm)
- **Crew Supervisor:**
651-8781
- **Hawaii Department of Agriculture:** 274-3069
- **Pest Hotline:** 643-PEST

Management Area Map






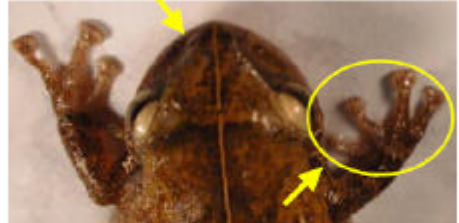
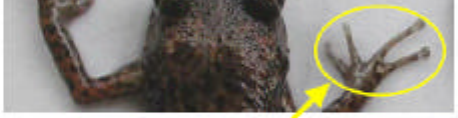



Tidbit

The eggs of the marsupial frog are laid in a brood pouch on the mothers back and the young hatch out in a zipper like fashion from the pouch.



The difference between Greenhouse and Coqui frogs:

Characteristics	GREENHOUSE FROG <i>E. planirostris</i>	COQUI FROG <i>E. coqui</i>
Body shape and size (maximum adult length)	<ul style="list-style-type: none"> < 1 inch long Narrower body shape <p>(not reportable)</p> 	<p>PLEASE REPORT!</p> <ul style="list-style-type: none"> Slightly > 1 inch long; adults about 1 1/2 times larger than greenhouse frogs Rounder body shape  <p>PLEASE REPORT!</p>
Color	<ul style="list-style-type: none"> Usually copper colored, mottled with black spots No mid-dorsal line (along back from nose to tail) Warty textured skin 	<ul style="list-style-type: none"> Greater variation in color, from light yellow to dark brown May be mottled with black spots Mid-dorsal line (stripe along back) may or may not be visible 
Shape of snout (head portion in front of eyes)	<ul style="list-style-type: none"> Narrower snout 	<ul style="list-style-type: none"> Broader, bow-shaped snout 
Toes and toe pads	<ul style="list-style-type: none"> Claw-like toes; toe pads not distinct 	<ul style="list-style-type: none"> Suction cup-like toe pads 
Male calling sounds	<ul style="list-style-type: none"> Soft, bird-like or cricket-like chirping 	<ul style="list-style-type: none"> Loud two-tone call, "ko-kee"
Habitat	<ul style="list-style-type: none"> Exclusively on ground level 	<ul style="list-style-type: none"> From ground level to tops of trees
Quarantine status	<ul style="list-style-type: none"> Not a quarantine pest 	<ul style="list-style-type: none"> Only an inter-island quarantine pest

This poster can be found at http://www2.ctahr.hawaii.edu/oc/freepubs/pdf/coqui_id.pdf

Work Notification Policy:

<http://www.hear.org/kisc/pdfs/200704coquiworknotificationpolicy.pdf>