



# Coqui News

Online at [www.hear.org/kisc/coqui\\_news](http://www.hear.org/kisc/coqui_news)

Kauai Invasive Species Committee

Work Notification

December 29-January 2

## Work update at Lawai infestation site

**Upcoming control work is scheduled to continue the week of December 29, 2008.** Crews will be working during daylight hours and up until around 9:30 pm.

**Field crew work is scheduled for Monday and Tuesday.**

For the next couple of weeks the crew will continue to work at the site, weather permitting.

They will be applying herbicide, where needed, to control vegetation. This will be by spot-application of either AquaMaster, Round-Up, or Garlon 4.

The crew will also apply citric acid as a ground drench to control female coqui and juvenile frogs. These applications will be applied wherever they hear

calling frogs, or in areas to continue a thorough sweep of the site.

After the holidays, we will resume with more in-depth work summaries.

Have a safe and joyous new year!



Happy New Year!



Help keep Kaua'i coqui-free!

Report coqui frogs!

[643-PEST](http://643-PEST)

POSTED:

Friday, December 26, 2008

### In this issue:

<i>Work Update</i>	1
<i>Management Area Map</i>	1
<i>Contact Phone</i>	1
<i>Tidbit</i>	1
<i>A comparison between greenhouse frogs and coqui</i>	2
<i>Notification policy link</i>	2

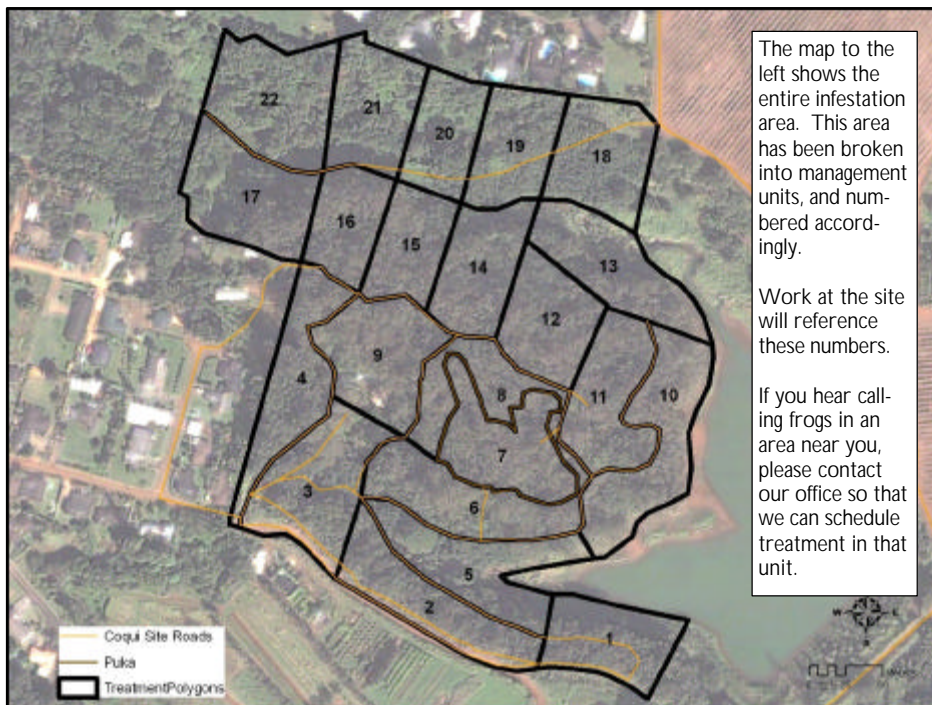
Want more info?

[www.hear.org](http://www.hear.org)

### Contact Phone Numbers:

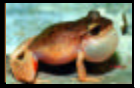
- **KISC:** 246-0684  
(from 7:00 am to 4:00 pm)
- **Crew Supervisor:**  
651-8781
- **Hawaii Department of Agriculture:** 274-3069
- **Pest Hotline:** 643-PEST

## Management Area Map



### Tidbit

The world's most ancient frogs are the Leio-pelmid's. They are survivors of the Jurassic period 200 million years ago.



The difference between Greenhouse and Coqui frogs:

Characteristics	<b>GREENHOUSE FROG</b> <i>E. planirostris</i>	<b>PLEASE REPORT!</b> <b>COQUI FROG</b> <b>PLEASE REPORT!</b> <i>E. coqui</i>
<b>Body shape and size</b> (maximum adult length)	<ul style="list-style-type: none"> <li>&lt; 1 inch long</li> <li>Narrower body shape</li> </ul> <p>(not reportable)</p> 	<ul style="list-style-type: none"> <li>Slightly &gt; 1 inch long; adults about 1 1/2 times larger than greenhouse frogs</li> <li>Rounder body shape</li> </ul> 
<b>Color</b>	<ul style="list-style-type: none"> <li>Usually copper colored, mottled with black spots</li> <li>No mid-dorsal line (along back from nose to tail)</li> <li>Warty textured skin</li> </ul> 	<ul style="list-style-type: none"> <li>Greater variation in color, from light yellow to dark brown</li> <li>May be mottled with black spots</li> <li>Mid-dorsal line (stripe along back) may or may not be visible</li> </ul> 
<b>Shape of snout</b> (head portion in front of eyes)	<ul style="list-style-type: none"> <li>Narrower snout</li> </ul> 	<ul style="list-style-type: none"> <li>Broader, bow-shaped snout</li> </ul> 
<b>Toes and toe pads</b>	<ul style="list-style-type: none"> <li>Claw-like toes; toe pads not distinct</li> </ul> 	<ul style="list-style-type: none"> <li>Suction cup-like toe pads</li> </ul> 
<b>Male calling sounds</b>	<ul style="list-style-type: none"> <li>Soft, bird-like or cricket-like chirping</li> </ul>	<ul style="list-style-type: none"> <li>Loud two-tone call, "ko-kee"</li> </ul>
<b>Habitat</b>	<ul style="list-style-type: none"> <li>Exclusively on ground level</li> </ul>	<ul style="list-style-type: none"> <li>From ground level to tops of trees</li> </ul>
<b>Quarantine status</b>	<ul style="list-style-type: none"> <li>Not a quarantine pest</li> </ul>	<ul style="list-style-type: none"> <li>Only an inter-island quarantine pest</li> </ul>

This poster can be found at [http://www2.ctahr.hawaii.edu/oc/freepubs/pdf/coqui\\_id.pdf](http://www2.ctahr.hawaii.edu/oc/freepubs/pdf/coqui_id.pdf)

Work Notification Policy:

<http://www.hear.org/kisc/pdfs/200704coquiworknotificationpolicy.pdf>