



Coqui News

Online at www.hear.org/kisc/coqui_news

Kauai Invasive Species Committee

Work Notification

December 22-26

Work update at Lawai infestation site

Upcoming control work is scheduled to continue the week of December 22, 2008. Crews will be working during daylight hours and up until around 9:30 pm.

Field crew work is scheduled for Monday and Tuesday.

Although this past week was a wet one, the crew was able to apply herbicide in section 4, controlling various weeds.

Citric acid was applied as a ground drench in sections 3, 6, and 9.

There were a couple of calling frogs in section 4 (3 were hand-captured), 6, and 9.

As a passive frog collection method, we have re-located a coqui habitat cage to section 4.

In it we have placed male frogs in an attempt to lure female frogs to the cage. The cage will be checked when the crew is at the site so that they can remove any female frogs.

For the next few weeks the crew will continue to work at the site, weather permitting.

They will be applying herbicide, where needed, to control vegetation. This will be by spot-application of either AquaMaster, Round-Up, or Garlon 4.

The crew will also apply citric acid as a ground drench to control female coqui and juvenile frogs. These applications will be applied wherever they hear calling frogs, or in areas to continue a thorough sweep of the site.



A coqui captured at the site

After the holidays, we will resume with more in-depth work summaries.

Help keep Kaua'i coqui-free!
Report coqui frogs!

[643-PEST](tel:643-PEST)



POSTED:

Friday, December 19, 2008

In this issue:

<i>Work Update</i>	1
<i>Management Area Map</i>	1
<i>Contact Phone</i>	1
<i>Tidbit</i>	1
<i>A comparison between greenhouse frogs and coqui</i>	2
<i>Notification policy link</i>	2

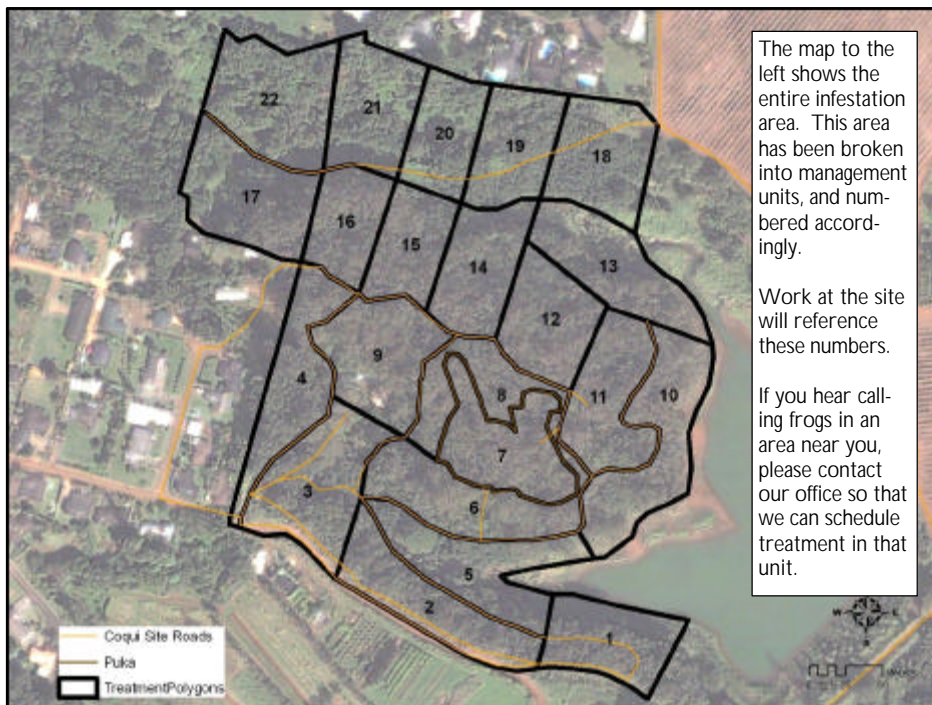
Want more info?

www.hear.org

Contact Phone Numbers:

- **KISC:** 246-0684
(from 7:00 am to 4:00 pm)
- **Crew Supervisor:**
651-8781
- **Hawaii Department of Agriculture:** 274-3069
- **Pest Hotline:** 643-PEST

Management Area Map






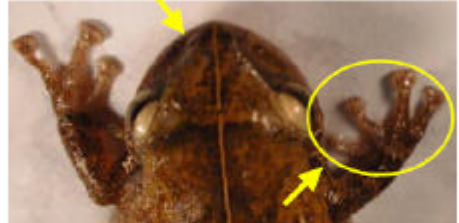
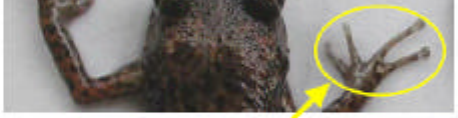



Tidbit

The Indian green frog (*Rana hexadactyla*) all but shuns the traditional amphibian diet of insects and feeds mainly on leaves and flowers. It is the only known leaf-eating frog in the world, with plants accounting for about 80% of its diet.



The difference between Greenhouse and Coqui frogs:

Characteristics	GREENHOUSE FROG <i>E. planirostris</i>	PLEASE REPORT! COQUI FROG PLEASE REPORT! <i>E. coqui</i>
Body shape and size (maximum adult length)	<ul style="list-style-type: none"> < 1 inch long Narrower body shape <p>(not reportable)</p> 	<ul style="list-style-type: none"> Slightly > 1 inch long; adults about 1 1/2 times larger than greenhouse frogs Rounder body shape 
Color	<ul style="list-style-type: none"> Usually copper colored, mottled with black spots No mid-dorsal line (along back from nose to tail) Warty textured skin 	<ul style="list-style-type: none"> Greater variation in color, from light yellow to dark brown May be mottled with black spots Mid-dorsal line (stripe along back) may or may not be visible 
Shape of snout (head portion in front of eyes)	<ul style="list-style-type: none"> Narrower snout 	<ul style="list-style-type: none"> Broader, bow-shaped snout 
Toes and toe pads	<ul style="list-style-type: none"> Claw-like toes; toe pads not distinct 	<ul style="list-style-type: none"> Suction cup-like toe pads 
Male calling sounds	<ul style="list-style-type: none"> Soft, bird-like or cricket-like chirping 	<ul style="list-style-type: none"> Loud two-tone call, "ko-kee"
Habitat	<ul style="list-style-type: none"> Exclusively on ground level 	<ul style="list-style-type: none"> From ground level to tops of trees
Quarantine status	<ul style="list-style-type: none"> Not a quarantine pest 	<ul style="list-style-type: none"> Only an inter-island quarantine pest

This poster can be found at http://www2.ctahr.hawaii.edu/oc/freepubs/pdf/coqui_id.pdf

Work Notification Policy:

<http://www.hear.org/kisc/pdfs/200704coquiworknotificationpolicy.pdf>