

Coqui News

Online at www.hear.org/kisc/coqui_news

Kauai Invasive Species Committee

Work Notification
December 1-5

Work update at Lawai infestation site

Upcoming control work is scheduled to continue the week of December 1, 2008.

Crews will be working during daylight hours and up until around 9:30 pm.

Field crew work is scheduled for Monday and Tuesday.

This past week the crew treated weeds with herbicide in sections 14-16 and sections 18-21. Job's tears, California grass, strawberry guava, guinea grass, and various weedy vines were targeted.

Citric acid was applied as a ground drench in section 3 as we continue our sweeps throughout the site.

Survey work was conducted in the management area as well as

the surrounding Lawai Highland neighborhood to follow up on reports of calling frogs. No frogs were detected outside of the management area. Calling frogs were heard on three neighboring properties abutting section 4. 3 mature frogs were hand-captured on the west edge of section 4.

This week the crew will apply citric acid in sections 16 and 17 as a ground drench. Depending on wind direction, with permission, we will be treating adjoining private properties with citric acid as well as section 4.

They will also continue with habitat modifications by treating weeds and re-sprouts in sections 4 and 6.

Survey will continue through-



Coqui captured with a refugia trap

out the management area and surrounding neighborhood.



Help keep Kaua'i coqui-free!

Report coqui frogs!

[643-PEST](tel:643-PEST)

POSTED:

Friday, November 28, 2008

In this issue:

<i>Work Update</i>	1
<i>Management Area Map</i>	1
<i>Contact Phone</i>	1
<i>Tidbit</i>	1
<i>A comparison between greenhouse frogs and coqui</i>	2
<i>Notification policy link</i>	2

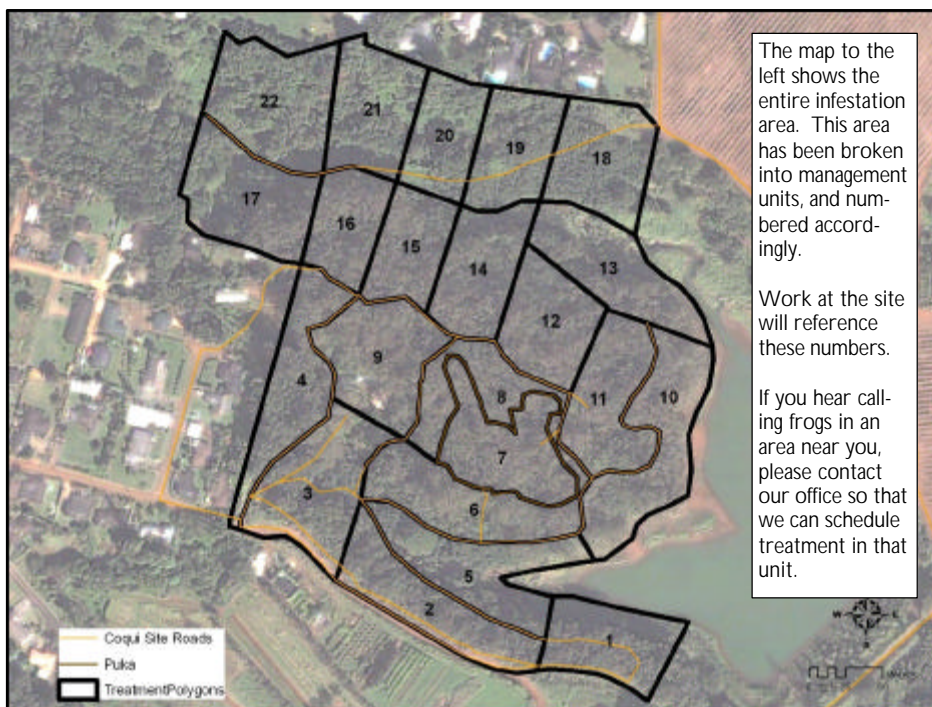
Want more info?

www.hear.org

Contact Phone Numbers:

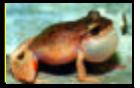
- **KISC:** 246-0684
(from 7:00 am to 4:00 pm)
- **Crew Supervisor:**
651-8781
- **Hawaii Department of Agriculture:** 274-3069
- **Pest Hotline:** 643-PEST

Management Area Map



Tidbit

The Amphibians are divided into three groups: the Urodela (newts and salamanders), the Apoda (worm-like caecilians), and the Anura (frogs and toads). The Anura (meaning tail-less) are the largest and most widely distributed amphibian group with over 3,500 species worldwide.



The difference between Greenhouse and Coqui frogs:

Characteristics	GREENHOUSE FROG <i>E. planirostris</i>	COQUI FROG <i>E. coqui</i>
Body shape and size (maximum adult length)	<ul style="list-style-type: none"> < 1 inch long Narrower body shape <p>(not reportable)</p> 	<p>PLEASE REPORT!</p> <ul style="list-style-type: none"> Slightly > 1 inch long; adults about 1 1/2 times larger than greenhouse frogs Rounder body shape  <p>PLEASE REPORT!</p>
Color	<ul style="list-style-type: none"> Usually copper colored, mottled with black spots No mid-dorsal line (along back from nose to tail) Warty textured skin 	<ul style="list-style-type: none"> Greater variation in color, from light yellow to dark brown May be mottled with black spots Mid-dorsal line (stripe along back) may or may not be visible 
Shape of snout (head portion in front of eyes)	<ul style="list-style-type: none"> Narrower snout 	<ul style="list-style-type: none"> Broader, bow-shaped snout 
Toes and toe pads	<ul style="list-style-type: none"> Claw-like toes; toe pads not distinct 	<ul style="list-style-type: none"> Suction cup-like toe pads 
Male calling sounds	<ul style="list-style-type: none"> Soft, bird-like or cricket-like chirping 	<ul style="list-style-type: none"> Loud two-tone call, "ko-kee"
Habitat	<ul style="list-style-type: none"> Exclusively on ground level 	<ul style="list-style-type: none"> From ground level to tops of trees
Quarantine status	<ul style="list-style-type: none"> Not a quarantine pest 	<ul style="list-style-type: none"> Only an inter-island quarantine pest

This poster can be found at http://www2.ctahr.hawaii.edu/oc/freepubs/pdf/coqui_id.pdf

Work Notification Policy:

<http://www.hear.org/kisc/pdfs/200704coquiworknotificationpolicy.pdf>