



Coqui News

Online at www.hear.org/kisc/coqui_news

Kauai Invasive Species Committee

Work Notification

November 3 - 7

Work update at Lawai infestation site

Upcoming control work is scheduled to continue the week of November 3, 2008.

Crews will be working during daylight hours and up until around 9:30 pm.

Field crew work is scheduled for Tuesday and Wednesday.

This past week the crew controlled weeds in sections 12 through 22. Guinea grass, strawberry guava, Job's tears, buffalo grass and other miscellaneous weeds were targeted.

Citric acid was applied in section 4 as a ground drench.

Surveys throughout the site detected only calling frogs near section 4 on private property although nearby neighbors have reported hand-capturing several

in their yard.

This week the crew will target vines throughout the site with herbicide.

They will also spray citric acid as a ground drench in sections 9, 16, and 17.

We are encouraged about this eradication project and the progress that has been made. By eliminating these last few frogs, we will be able to declare Kaua'i "Coqui-free"!

Thank you to all of you who have helped with this project and supported the ongoing efforts.



Happy Halloween!

Help keep Kaua'i coqui-free!

Report coqui frogs!

[643-PEST](tel:643-PEST)



POSTED:

Friday, October 31, 2008

In this issue:

<i>Work Update</i>	1
<i>Management Area Map</i>	1
<i>Contact Phone</i>	1
<i>Tidbit</i>	1
<i>A comparison between greenhouse frogs and coqui</i>	2
<i>Notification policy link</i>	2

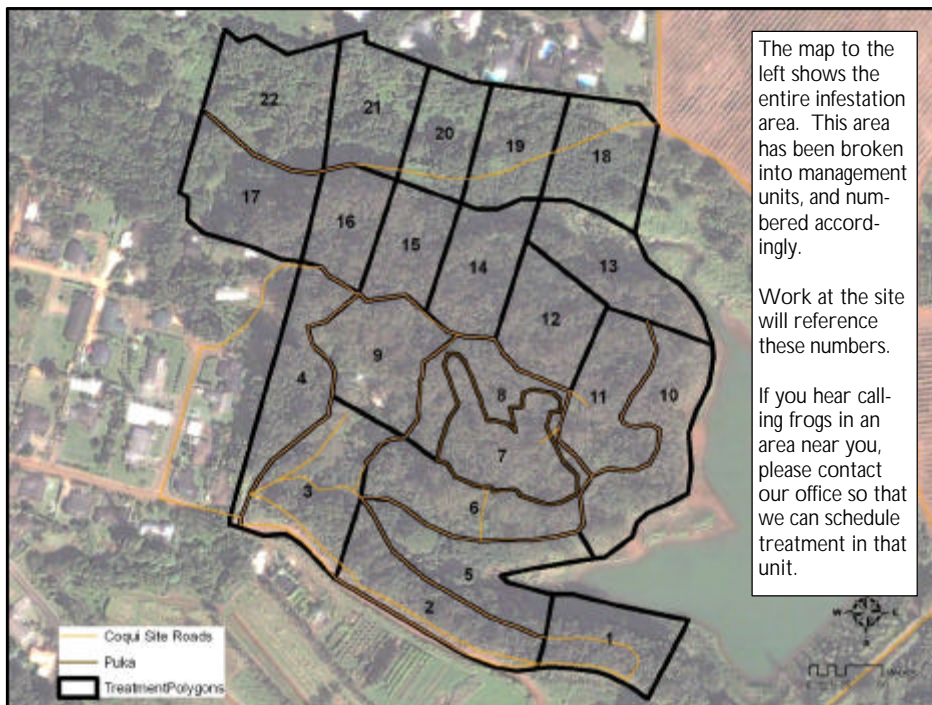
Want more info?

www.hear.org

Contact Phone Numbers:

- **KISC:** 246-0684
(from 7:00 am to 4:00 pm)
- **Crew Supervisor:**
651-8781
- **Hawaii Department of Agriculture:** 274-3069
- **Pest Hotline:** 643-PEST

Management Area Map



Tidbit

A frogs skin reflects the same amount of ultra-violet light as its immediate surroundings. This way it can protect itself from predators like snakes.



The difference between Greenhouse and Coqui frogs:

Characteristics	GREENHOUSE FROG <i>E. planirostris</i>	PLEASE REPORT! COQUI FROG <i>E. coqui</i> PLEASE REPORT!
Body shape and size (maximum adult length)	<ul style="list-style-type: none"> < 1 inch long Narrower body shape <p>(not reportable)</p> 	<ul style="list-style-type: none"> Slightly > 1 inch long; adults about 1 1/2 times larger than greenhouse frogs Rounder body shape 
Color	<ul style="list-style-type: none"> Usually copper colored, mottled with black spots No mid-dorsal line (along back from nose to tail) Warty textured skin 	<ul style="list-style-type: none"> Greater variation in color, from light yellow to dark brown May be mottled with black spots Mid-dorsal line (stripe along back) may or may not be visible 
Shape of snout (head portion in front of eyes)	<ul style="list-style-type: none"> Narrower snout 	<ul style="list-style-type: none"> Broader, bow-shaped snout 
Toes and toe pads	<ul style="list-style-type: none"> Claw-like toes; toe pads not distinct 	<ul style="list-style-type: none"> Suction cup-like toe pads 
Male calling sounds	<ul style="list-style-type: none"> Soft, bird-like or cricket-like chirping 	<ul style="list-style-type: none"> Loud two-tone call, "ko-kee"
Habitat	<ul style="list-style-type: none"> Exclusively on ground level 	<ul style="list-style-type: none"> From ground level to tops of trees
Quarantine status	<ul style="list-style-type: none"> Not a quarantine pest 	<ul style="list-style-type: none"> Only an inter-island quarantine pest

This poster can be found at http://www2.ctahr.hawaii.edu/oc/freepubs/pdf/coqui_id.pdf

Work Notification Policy:

<http://www.hear.org/kisc/pdfs/200704coquiworknotificationpolicy.pdf>