



Coqui News

Online at www.hear.org/kisc/coqui_news

Kauai Invasive Species Committee

Work Notification

Oct. 27 – Oct. 31

Work update at Lawai infestation site

Upcoming control work is scheduled to continue the week of October 27, 2008. Crews will be working during daylight hours and up until around 9:30 pm.

Field crew work is scheduled for Monday and Tuesday.

This past week the crew was hampered a bit by rainy weather. They were, however, able to treat grasses and weeds in sections 5 and 6 and part of section 7.

Citric acid was applied as a ground drench in section 3.

The crew surveyed the entire site and heard only those problematic callers on private property near section 4.

Survey work was conducted

outside of Lawai following up past treatments of coqui, but none were heard.

This week the crew will apply herbicide in sections 2, 3, and 4 to treat pothos vines and octopus trees.

They are also scheduled to apply citric acid in section 4 and 9.

We are getting close to eradication of coqui at this site in Lawai. Many work hours backed by dedicated funding has made success possible. Addressing this small collection of frogs on private property as expediently as possible will be the key to total eradication.



Mixing citric acid

Help keep Kaua'i coqui-free!

Report coqui frogs!

[643-PEST](tel:643-PEST)

POSTED:

Friday, October 24, 2008

In this issue:

<i>Work Update</i>	1
<i>Management Area Map</i>	1
<i>Contact Phone</i>	1
<i>Tidbit</i>	1
<i>A comparison between greenhouse frogs and coqui</i>	2
<i>Notification policy link</i>	2

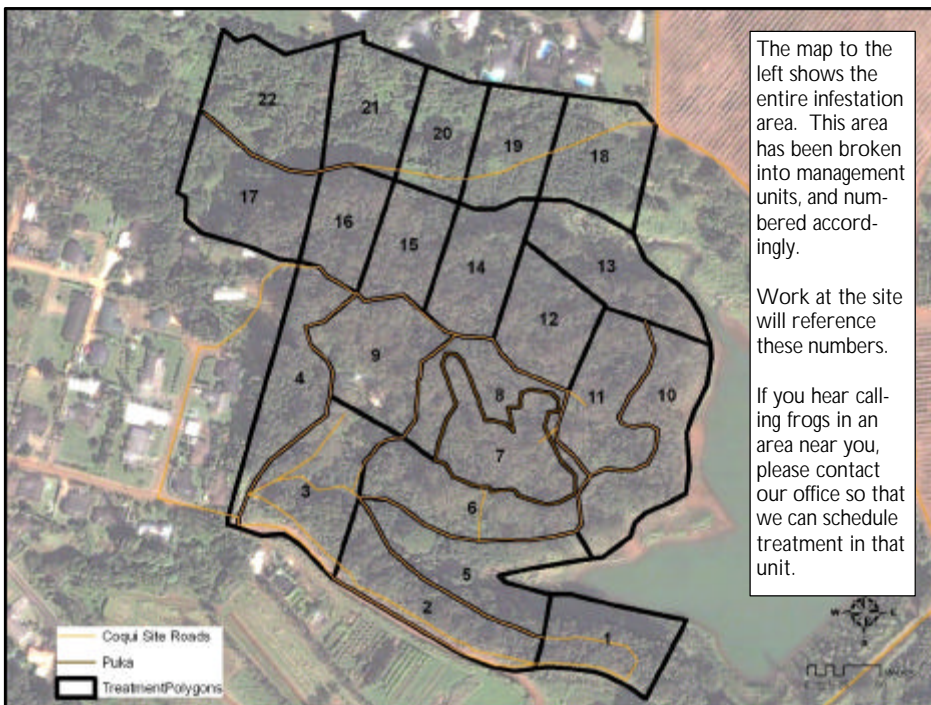
Want more info?

www.hear.org

Contact Phone Numbers:

- **KISC:** 246-0684
(from 7:00 am to 4:00 pm)
- **Crew Supervisor:**
651-8781
- **Hawaii Department of Agriculture:** 274-3069
- **Pest Hotline:** 643-PEST





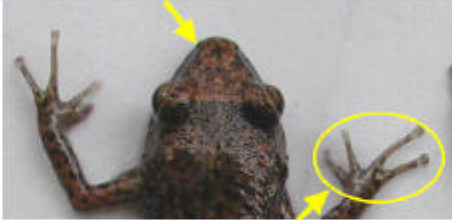
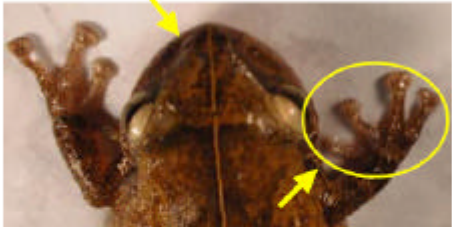
Management Area Map



Tidbit

The Borneo flying frog (*Rhacophorus nigropalmatus*) can glide from tree to tree with limbs and webbed toes outspread to act as air brakes and rudimentary wings.

The difference between Greenhouse and Coqui frogs:

Characteristics	GREENHOUSE FROG <i>E. planirostris</i>	PLEASE REPORT! COQUI FROG <i>E. coqui</i> PLEASE REPORT!
Body shape and size (maximum adult length)	<ul style="list-style-type: none"> < 1 inch long Narrower body shape <p>(not reportable)</p> 	<ul style="list-style-type: none"> Slightly > 1 inch long; adults about 1 1/2 times larger than greenhouse frogs Rounder body shape 
Color	<ul style="list-style-type: none"> Usually copper colored, mottled with black spots No mid-dorsal line (along back from nose to tail) Warty textured skin 	<ul style="list-style-type: none"> Greater variation in color, from light yellow to dark brown May be mottled with black spots Mid-dorsal line (stripe along back) may or may not be visible 
Shape of snout (head portion in front of eyes)	<ul style="list-style-type: none"> Narrower snout 	<ul style="list-style-type: none"> Broader, bow-shaped snout 
Toes and toe pads	<ul style="list-style-type: none"> Claw-like toes; toe pads not distinct 	<ul style="list-style-type: none"> Suction cup-like toe pads
Male calling sounds	<ul style="list-style-type: none"> Soft, bird-like or cricket-like chirping 	<ul style="list-style-type: none"> Loud two-tone call, "ko-kee"
Habitat	<ul style="list-style-type: none"> Exclusively on ground level 	<ul style="list-style-type: none"> From ground level to tops of trees
Quarantine status	<ul style="list-style-type: none"> Not a quarantine pest 	<ul style="list-style-type: none"> Only an inter-island quarantine pest

This poster can be found at http://www2.ctahr.hawaii.edu/oc/freepubs/pdf/coqui_id.pdf

Work Notification Policy:

<http://www.hear.org/kisc/pdfs/200704coquiworknotificationpolicy.pdf>