

# Coqui News

Online at [www.hear.org/kisc/coqui\\_news](http://www.hear.org/kisc/coqui_news)

Kauai Invasive Species  
Committee

Work Notification

Oct. 20 – Oct. 24

## Work update at Lawai infestation site

**Upcoming control work is scheduled to continue the week of October 20, 2008.** Crews will be working during daylight hours and up until around 9:30 pm.

**Field crew work is scheduled for Monday and Tuesday.**

This past week the crew controlled weeds and vegetation with herbicide in sections 2, 3, 4, 5, 12, 14, and 15.

Rain prevented the crew from applying citric acid on Monday, but on Tuesday the crew was able to apply it as a ground drench in section 5 where they had heard a calling frog the night before.

Survey of the entire site detected calling frogs in an area

just west of section 4 on private property. One frog was hand-captured just south of section 3.

This week the crew will herbicide in section 5 and 6 to control guinea grass and tree re-sprouts. They will also work in section 3 and 4 to treat pot-hos vines.

Citric acid is scheduled to be applied in sections 2 and 3 to concentrate on maintaining a coqui-free boundary.

Please tell friends, family, and acquaintances about the importance of reporting calling frogs. KISC and HDOA are working on rapid responses to ensure that no other coqui populations are established.



Coqui frog

Help keep Kaua'i coqui-free!

Report coqui frogs!

POSTED:

Friday, October 17, 2008

### In this issue:

|  |   |
|--|---|
| <i>Work Update</i>                                     | 1 |
| <i>Management Area Map</i>                             | 1 |
| <i>Contact Phone</i>                                   | 1 |
| <i>Tidbit</i>  | 1 |
| <i>A comparison between greenhouse frogs and coqui</i> | 2 |
| <i>Notification policy link</i>                        | 2 |

Want more info?

[www.hear.org](http://www.hear.org)

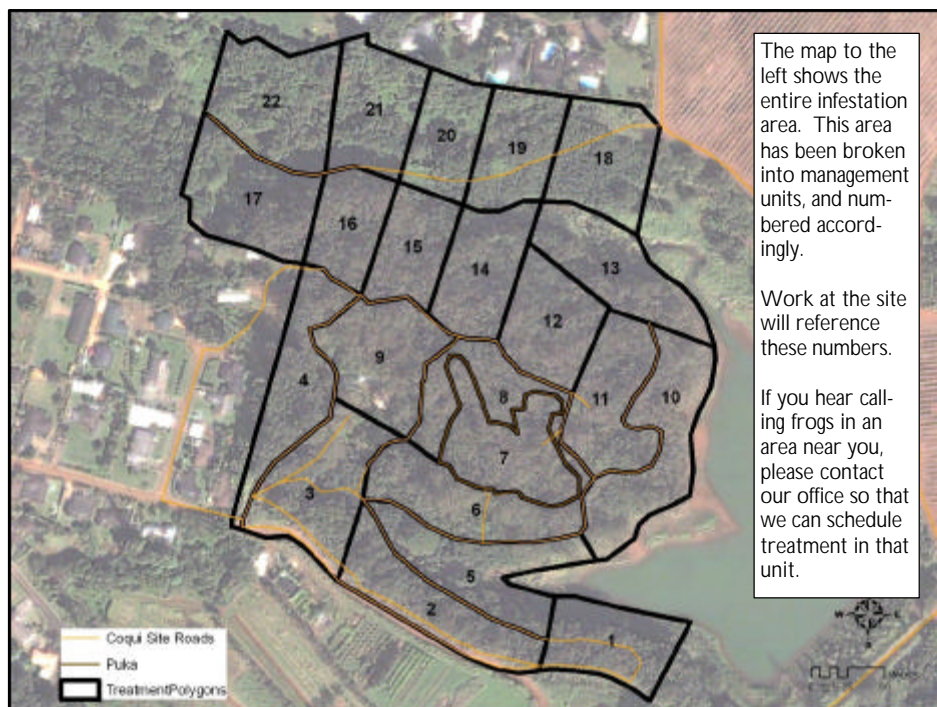
### Contact Phone Numbers:

- **KISC:** 246-0684  
(from 7:00 am to 4:00 pm)
- **Crew Supervisor:**  
651-8781
- **Hawaii Department of Agriculture:** 274-3069
- **Pest Hotline:** 643-PEST





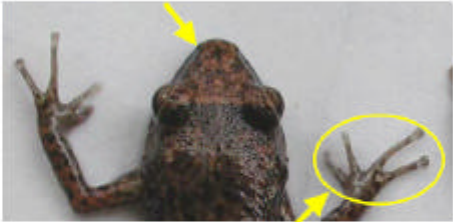
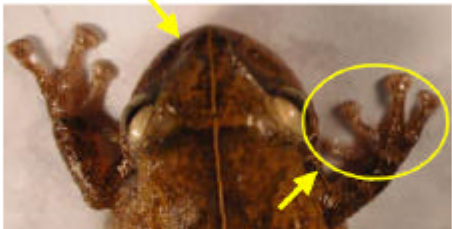
### Tidbit

Biologists have discovered a wealth of new frog species in the rainforests of eastern Madagascar. 106 new frogs were discovered during a four year survey.

## Management Area Map



The difference between Greenhouse and Coqui frogs:

| Characteristics  | <b>GREENHOUSE FROG</b><br><i>E. planirostris</i>  | <b>COQUI FROG</b><br><i>E. coqui</i>  |
|--|---|---|
| <b>Body shape and size</b><br>(maximum adult length)     | <ul style="list-style-type: none"> <li>&lt; 1 inch long</li> <li>Narrower body shape</li> </ul> <p>(not reportable)</p>    | <p>PLEASE REPORT!</p> <ul style="list-style-type: none"> <li>Slightly &gt; 1 inch long; adults about 1 1/2 times larger than greenhouse frogs</li> <li>Rounder body shape</li> </ul>  <p>PLEASE REPORT!</p>                    |
| <b>Color</b>   | <ul style="list-style-type: none"> <li>Usually copper colored, mottled with black spots</li> <li>No mid-dorsal line (along back from nose to tail)</li> <li>Warty textured skin</li> </ul>  | <ul style="list-style-type: none"> <li>Greater variation in color, from light yellow to dark brown</li> <li>May be mottled with black spots</li> <li>Mid-dorsal line (stripe along back) may or may not be visible</li> </ul>  |
| <b>Shape of snout</b><br>(head portion in front of eyes) | <ul style="list-style-type: none"> <li>Narrower snout</li> </ul>   | <ul style="list-style-type: none"> <li>Broader, bow-shaped snout</li> </ul>   |
| <b>Toes and toe pads</b>                                 | <ul style="list-style-type: none"> <li>Claw-like toes; toe pads not distinct</li> </ul>   | <ul style="list-style-type: none"> <li>Suction cup-like toe pads</li> </ul>   |
| <b>Male calling sounds</b>                               | <ul style="list-style-type: none"> <li>Soft, bird-like or cricket-like chirping</li> </ul>  | <ul style="list-style-type: none"> <li>Loud two-tone call, "ko-kee"</li> </ul>  |
| <b>Habitat</b>   | <ul style="list-style-type: none"> <li>Exclusively on ground level</li> </ul>   | <ul style="list-style-type: none"> <li>From ground level to tops of trees</li> </ul>  |
| <b>Quarantine status</b>                                 | <ul style="list-style-type: none"> <li>Not a quarantine pest</li> </ul>   | <ul style="list-style-type: none"> <li>Only an inter-island quarantine pest</li> </ul>  |

This poster can be found at [http://www2.ctahr.hawaii.edu/oc/freepubs/pdf/coqui\\_id.pdf](http://www2.ctahr.hawaii.edu/oc/freepubs/pdf/coqui_id.pdf)

Work Notification Policy:

<http://www.hear.org/kisc/pdfs/200704coquiworknotificationpolicy.pdf>