

# Coqui News

Online at [www.hear.org/kisc/coqui\\_news](http://www.hear.org/kisc/coqui_news)

Kauai Invasive Species  
Committee

Work Notification

Sept. 22 – Sept. 26

## Work update at Lawai infestation site

**Upcoming control work is scheduled to continue the week of September 22, 2008.** Crews will be working during daylight hours and up until around 9:30 pm.

**Field crew work is scheduled for Monday and Tuesday.**

This past week the crew applied herbicide to control weeds in sections 5, as well as in sections 17 through 22.

Citric acid was applied just outside of section 18 where calling frogs had been heard the previous week.

Night-time survey of the area heard a single calling frog in section 10 and several calling frogs just west of section 4 on private property.

On Tuesday night the crew then had to shift attention to respond to a confirmed coqui elsewhere on the island. One was hand-captured and one was sprayed. KISC will continue to monitor for calling frogs at this Lihue location.

This week the crew will apply herbicide just east of section 18 to control guinea grass, as well as in section 7 to control other vegetation.

They are also scheduled to apply citric acid in section 10 and 11 as they continue their sweep of the site.



Coqui frog in its native habitat in Puerto Rico. Photo by: flickr.com/photos/djsoundwav/1450675634/

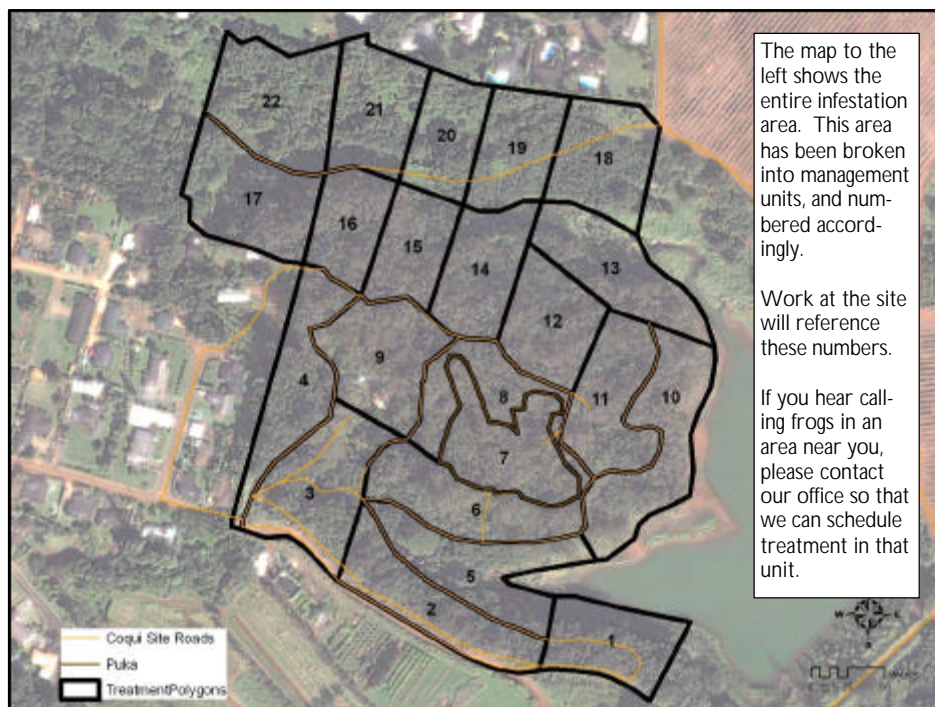
Help keep Kaua'i coqui-free!

Report coqui frogs!

[643-PEST](tel:643-PEST)



## Management Area Map



POSTED:

Friday, September 19, 2008

### In this issue:

<i>Work Update</i>	1
<i>Management Unit Map</i>	1
<i>Contact Phone</i>	1
<i>Tidbit</i>	1
<i>A comparison between greenhouse frogs and coqui</i>	2
<i>Notification policy link</i>	2

Want more info?

[www.hear.org](http://www.hear.org)

### Contact Phone Numbers:





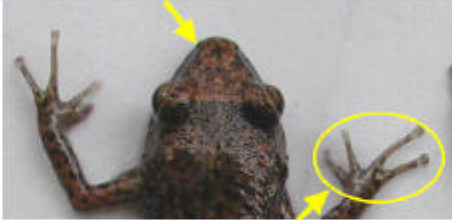
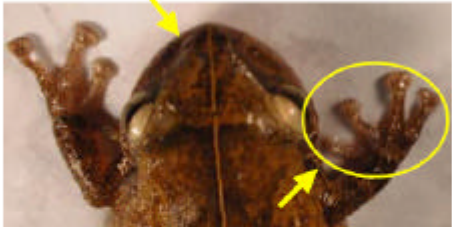
- **KISC:** 246-0684  
(from 7:00 am to 4:00 pm)
- **Crew Supervisor:**  
651-8781
- **Hawaii Department of Agriculture:** 274-3069
- **Pest Hotline:** 643-PEST

### Tidbit

The Strawberry Poison Dart frog transports its tadpole on her back to fresh water usually in a bromeliad high in a tree.



The difference between Greenhouse and Coqui frogs:

Characteristics	<b>GREENHOUSE FROG</b> <i>E. planirostris</i>	<b>COQUI FROG</b> <i>E. coqui</i>
<b>Body shape and size</b> (maximum adult length)	<ul style="list-style-type: none"> <li>&lt; 1 inch long</li> <li>Narrower body shape</li> </ul> <p>(not reportable)</p> 	<p>PLEASE REPORT!</p> <ul style="list-style-type: none"> <li>Slightly &gt; 1 inch long; adults about 1 1/2 times larger than greenhouse frogs</li> <li>Rounder body shape</li> </ul>  <p>PLEASE REPORT!</p>
<b>Color</b>	<ul style="list-style-type: none"> <li>Usually copper colored, mottled with black spots</li> <li>No mid-dorsal line (along back from nose to tail)</li> <li>Warty textured skin</li> </ul> 	<ul style="list-style-type: none"> <li>Greater variation in color, from light yellow to dark brown</li> <li>May be mottled with black spots</li> <li>Mid-dorsal line (stripe along back) may or may not be visible</li> </ul> 
<b>Shape of snout</b> (head portion in front of eyes)	<ul style="list-style-type: none"> <li>Narrower snout</li> </ul> 	<ul style="list-style-type: none"> <li>Broader, bow-shaped snout</li> </ul> 
<b>Toes and toe pads</b>	<ul style="list-style-type: none"> <li>Claw-like toes; toe pads not distinct</li> </ul>	<ul style="list-style-type: none"> <li>Suction cup-like toe pads</li> </ul>
<b>Male calling sounds</b>	<ul style="list-style-type: none"> <li>Soft, bird-like or cricket-like chirping</li> </ul>	<ul style="list-style-type: none"> <li>Loud two-tone call, "ko-kee"</li> </ul>
<b>Habitat</b>	<ul style="list-style-type: none"> <li>Exclusively on ground level</li> </ul>	<ul style="list-style-type: none"> <li>From ground level to tops of trees</li> </ul>
<b>Quarantine status</b>	<ul style="list-style-type: none"> <li>Not a quarantine pest</li> </ul>	<ul style="list-style-type: none"> <li>Only an inter-island quarantine pest</li> </ul>

This poster can be found at [http://www2.ctahr.hawaii.edu/oc/freepubs/pdf/coqui\\_id.pdf](http://www2.ctahr.hawaii.edu/oc/freepubs/pdf/coqui_id.pdf)

Work Notification Policy:

<http://www.hear.org/kisc/pdfs/200704coquiworknotificationpolicy.pdf>