

Coqui News

Online at www.hear.org/kisc/coqui_news

Kauai Invasive Species
Committee

Work Notification
Sept. 15 – Sept. 19

Work update at Lawai infestation site

Upcoming control work is scheduled to continue the week of September 15, 2008. Crews will be working during daylight hours and up until around 9:30 pm.

Field crew work is scheduled for Monday and Tuesday.

This past week the crew maintained weeds and vegetation with herbicide in sections 17 through 22.

Vegetation was also cleared with machinery in sections 14-16 on the steep slope to the intake side of the reservoir. Strawberry guava and dead trees were cleared. This habitat modification will help to inhibit coqui reproduction and movement.

Citric acid was applied as a ground-drench in section 7, as the crew maintains their sweep across the management areas.

There was a slight increase in calling frogs heard (8 total). One was captured in section 11, two were heard just east of section 18, and 5 were heard just west of section 4 on private property.

This coming week the crew will spot-spray herbicide to continue vegetation maintenance.

They will also apply citric acid around section 18, in an area where calling frogs were heard, as well as other surrounding boundaries.



Coqui frog on a leaf

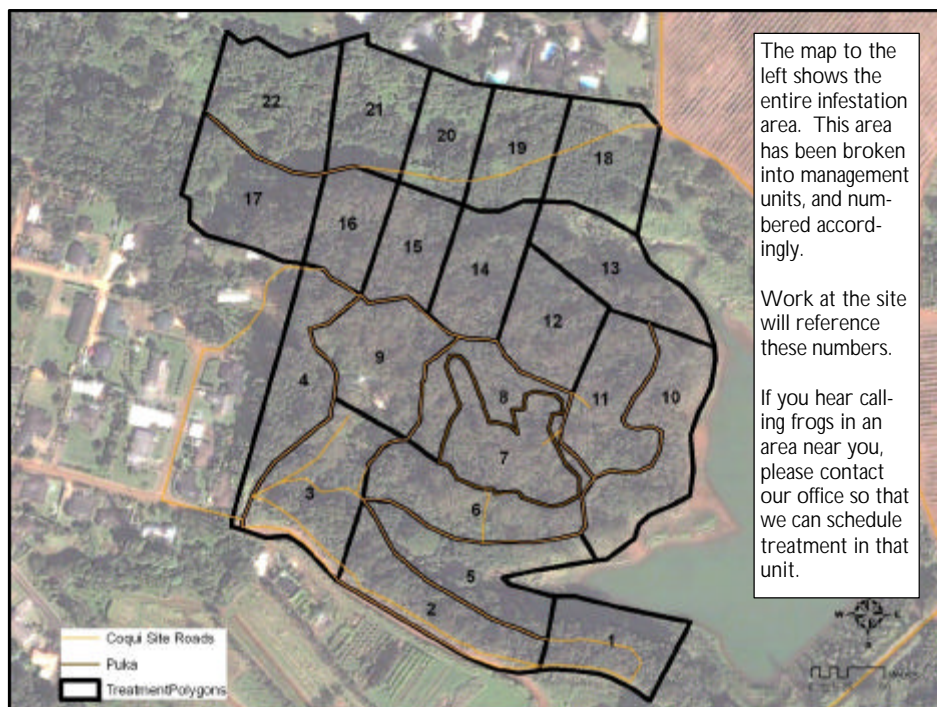


Help keep Kaua'i coqui-free!

Report coqui frogs!

643-PEST

Management Area Map



POSTED:

Friday, September 12, 2008

In this issue:

<i>Work Update</i>	1
<i>Management Unit Map</i>	1
<i>Contact Phone</i>	1
<i>Tidbit</i>	1
<i>A comparison between greenhouse frogs and coqui</i>	2
<i>Notification policy link</i>	2

Want more info?

www.hear.org





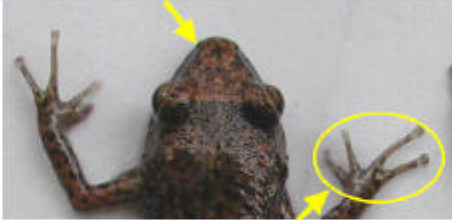
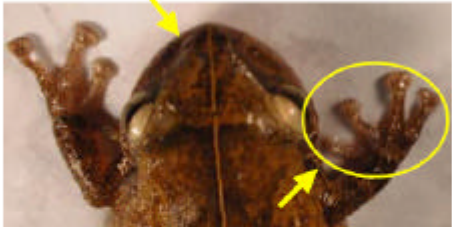
Contact Phone Numbers:

- **KISC:** 246-0684
(from 7:00 am to 4:00 pm)
- **Crew Supervisor:**
651-8781
- **Hawaii Department of Agriculture:** 274-3069
- **Pest Hotline:** 643-PEST

Tidbit

The male hairy frog of west Africa (*Trichobatrachus robustus*) is covered in hair for some strange reason. It may be for recognition or camouflage.

The difference between Greenhouse and Coqui frogs:

Characteristics	GREENHOUSE FROG <i>E. planirostris</i>	COQUI FROG <i>E. coqui</i>
Body shape and size (maximum adult length)	<ul style="list-style-type: none"> < 1 inch long Narrower body shape <p>(not reportable)</p> 	<p>PLEASE REPORT!</p> <ul style="list-style-type: none"> Slightly > 1 inch long; adults about 1 1/2 times larger than greenhouse frogs Rounder body shape  <p>PLEASE REPORT!</p>
Color	<ul style="list-style-type: none"> Usually copper colored, mottled with black spots No mid-dorsal line (along back from nose to tail) Warty textured skin 	<ul style="list-style-type: none"> Greater variation in color, from light yellow to dark brown May be mottled with black spots Mid-dorsal line (stripe along back) may or may not be visible 
Shape of snout (head portion in front of eyes)	<ul style="list-style-type: none"> Narrower snout 	<ul style="list-style-type: none"> Broader, bow-shaped snout 
Toes and toe pads	<ul style="list-style-type: none"> Claw-like toes; toe pads not distinct 	<ul style="list-style-type: none"> Suction cup-like toe pads
Male calling sounds	<ul style="list-style-type: none"> Soft, bird-like or cricket-like chirping 	<ul style="list-style-type: none"> Loud two-tone call, "ko-kee"
Habitat	<ul style="list-style-type: none"> Exclusively on ground level 	<ul style="list-style-type: none"> From ground level to tops of trees
Quarantine status	<ul style="list-style-type: none"> Not a quarantine pest 	<ul style="list-style-type: none"> Only an inter-island quarantine pest

This poster can be found at http://www2.ctahr.hawaii.edu/oc/freepubs/pdf/coqui_id.pdf

Work Notification Policy:

<http://www.hear.org/kisc/pdfs/200704coquiworknotificationpolicy.pdf>