



Coqui News

Online at www.hear.org/kisc/coqui_news

Kauai Invasive Species Committee

Work Notification
Sept. 1 – Sept. 5

Work update at Lawai infestation site

Upcoming control work is scheduled to continue the week of September 1, 2008. Crews will be working during daylight hours and up until around 9:30 pm.

Field crew work is scheduled for Monday through Friday.

Work this past week involved a lot of vegetation clean-up at this site. Contracted clearing with a hydro-axe was able to clear section 5 of hau (see photo) as well as wood debris and small stumps along the ridgeline through sections 11 and 12.

Also, the crew was able to control weeds with herbicide in sections 3, 5, and along the ditch-line road.

Citric acid was applied in section 2 as part of our ongoing sweep of the area to kill hidden juvenile and female frogs.

After a survey of the entire area the only frogs that were heard were just West of section 4.

This week, mechanical vegetation control will continue through sections 14 and 15. Contracted work will also continue to improve access roads.

The crew will apply herbicide in section 2 to control tree sprouts and vines.

Citric acid will be applied in section 6 as we move across the site to ensure complete coverage for control.



Cleared hau from section 5



Help keep Kaua'i coqui-free!

Report coqui frogs!

[643-PEST](tel:643-PEST)

POSTED:

Friday, August 29, 2008

In this issue:

<i>Work Update</i>	1
<i>Management Unit Map</i>	1
<i>Contact Phone</i>	1
<i>Tidbit</i>	1
<i>A comparison between greenhouse frogs and coqui</i>	2
<i>Notification policy link</i>	2

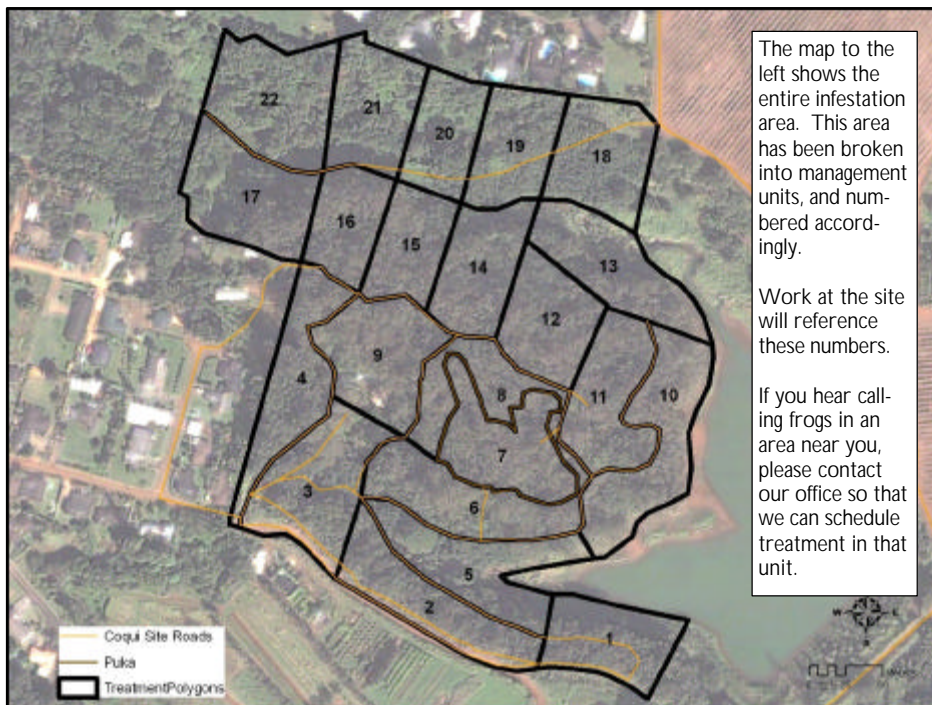
Want more info?

www.hear.org

Contact Phone Numbers:

- **KISC:** 246-0684
(from 7:00 am to 4:00 pm)
- **Crew Supervisor:**
651-8781
- **Hawaii Department of Agriculture:** 274-3069
- **Pest Hotline:** 643-PEST

Management Area Map



Tidbit

Herpetologists blame increasing UV radiation levels and the resulting damage to the ozone layer for amphibian declines since 1989. UV radiation damages DNA causing cell mutations and death. Frogs have very low levels of the necessary enzyme, photolyase, to repair the damage, and it is believed that this is a large contributor to their demise.



The difference between Greenhouse and Coqui frogs:

Characteristics	GREENHOUSE FROG <i>E. planirostris</i>	PLEASE REPORT! COQUI FROG <i>E. coqui</i> PLEASE REPORT!
Body shape and size (maximum adult length)	<ul style="list-style-type: none"> < 1 inch long Narrower body shape <p>(not reportable)</p> 	<ul style="list-style-type: none"> Slightly > 1 inch long; adults about 1 1/2 times larger than greenhouse frogs Rounder body shape 
Color	<ul style="list-style-type: none"> Usually copper colored, mottled with black spots No mid-dorsal line (along back from nose to tail) Warty textured skin 	<ul style="list-style-type: none"> Greater variation in color, from light yellow to dark brown May be mottled with black spots Mid-dorsal line (stripe along back) may or may not be visible 
Shape of snout (head portion in front of eyes)	<ul style="list-style-type: none"> Narrower snout 	<ul style="list-style-type: none"> Broader, bow-shaped snout 
Toes and toe pads	<ul style="list-style-type: none"> Claw-like toes; toe pads not distinct 	<ul style="list-style-type: none"> Suction cup-like toe pads 
Male calling sounds	<ul style="list-style-type: none"> Soft, bird-like or cricket-like chirping 	<ul style="list-style-type: none"> Loud two-tone call, "ko-kee"
Habitat	<ul style="list-style-type: none"> Exclusively on ground level 	<ul style="list-style-type: none"> From ground level to tops of trees
Quarantine status	<ul style="list-style-type: none"> Not a quarantine pest 	<ul style="list-style-type: none"> Only an inter-island quarantine pest

This poster can be found at http://www2.ctahr.hawaii.edu/oc/freepubs/pdf/coqui_id.pdf

Work Notification Policy:

<http://www.hear.org/kisc/pdfs/200704coquiworknotificationpolicy.pdf>