



Coqui News

Online at www.hear.org/kisc/coqui_news

Kauai Invasive Species Committee

Work Notification
August 18 – August 22

Work update at Lawai infestation site

Upcoming control work is scheduled to continue the week of August 18, 2008.

Crews will be working during daylight hours and up until around 9:30 pm.

Field crew work is scheduled for Monday and Tuesday, August 18 and 19.

Work this past week included herbicide application in sections 10, 11, and 12 to control guinea grass, strawberry guava, and other weeds.

Unfortunately, one of our hoses was stolen at the site, so the crew was unable to fill the spray tank on the one night they worked.

Monitoring was conducted at the site and no frogs were heard calling, including our sen-

tinell frogs in the coqui habitat cages.

The crew also responded to a coqui report up Lawai Valley. This report was confirmed to be greenhouse frogs. Survey work was also conducted in Wailua where coqui frogs had been treated and nothing was heard.

Work this week will include application of citric acid in sections 3 and 9 and wherever calling frogs are heard.

We are also still waiting for contracted work to begin which may happen this week.

The county fair is coming up fast, scheduled for the end of August. Please stop by our booth for information about this project and other target



KISC crewmember applying citric acid as a ground-drench

species we are working on. We will also have new give-away items!

Help keep Kaua'i coqui-free!

Report coqui frogs!

[643-PEST](tel:643-PEST)

POSTED:

Thursday, August 14, 2008

In this issue:

<i>Work Update</i>	1
<i>Management Unit Map</i>	1
<i>Contact Phone</i>	1
<i>Tidbit</i>	1
<i>A comparison between greenhouse frogs and coqui</i>	2
<i>Notification policy link</i>	2

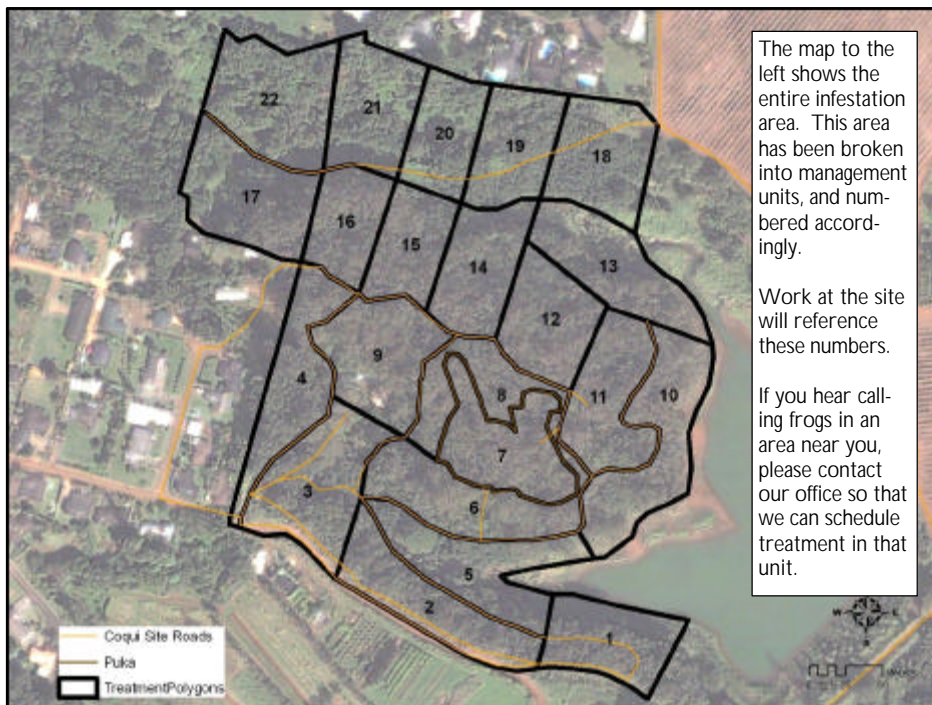
Want more info?

www.hear.org

Contact Phone Numbers:

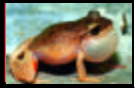
- **KISC:** 246-0684
(from 7:00 am to 4:00 pm)
- **Crew Supervisor:**
651-8781
- **Hawaii Department of Agriculture:** 274-3069
- **Pest Hotline:** 643-PEST

Management Area Map



Tidbit

South Africa has one of the most varied frog populations in the world, with more than 50 of its 106 species found nowhere else.



The difference between Greenhouse and Coqui frogs:

Characteristics	GREENHOUSE FROG <i>E. planirostris</i>	PLEASE REPORT! COQUI FROG <i>E. coqui</i> PLEASE REPORT!
Body shape and size (maximum adult length)	<ul style="list-style-type: none"> < 1 inch long Narrower body shape <p>(not reportable)</p> 	<ul style="list-style-type: none"> Slightly > 1 inch long; adults about 1 1/2 times larger than greenhouse frogs Rounder body shape 
Color	<ul style="list-style-type: none"> Usually copper colored, mottled with black spots No mid-dorsal line (along back from nose to tail) Warty textured skin 	<ul style="list-style-type: none"> Greater variation in color, from light yellow to dark brown May be mottled with black spots Mid-dorsal line (stripe along back) may or may not be visible 
Shape of snout (head portion in front of eyes)	<ul style="list-style-type: none"> Narrower snout 	<ul style="list-style-type: none"> Broader, bow-shaped snout 
Toes and toe pads	<ul style="list-style-type: none"> Claw-like toes; toe pads not distinct 	<ul style="list-style-type: none"> Suction cup-like toe pads 
Male calling sounds	<ul style="list-style-type: none"> Soft, bird-like or cricket-like chirping 	<ul style="list-style-type: none"> Loud two-tone call, "ko-kee"
Habitat	<ul style="list-style-type: none"> Exclusively on ground level 	<ul style="list-style-type: none"> From ground level to tops of trees
Quarantine status	<ul style="list-style-type: none"> Not a quarantine pest 	<ul style="list-style-type: none"> Only an inter-island quarantine pest

This poster can be found at http://www2.ctahr.hawaii.edu/oc/freepubs/pdf/coqui_id.pdf

Work Notification Policy:

<http://www.hear.org/kisc/pdfs/200704coquiworknotificationpolicy.pdf>