



Coqui News

Online at www.hear.org/kisc/coqui_news

Kauai Invasive Species Committee

Work Notification
August 11 – August 15

Work update at Lawai infestation site

Upcoming control work is scheduled to continue the week of August 11, 2008. Crews will be working during daylight hours and up until around 9:30 pm.

Field crew work is scheduled for Monday, August 11 only due to crew training scheduled for the rest of the week.

This past week the crew used herbicide to control grasses and weeds growing in sections 17-22.

They also applied citric acid just south of section 3 to control calling frogs.

They hand-captured 2 frogs at the site and only heard one other frog calling in section 9 which they will attempt to capture this week.

Contracted clearing work was not able to start this week due to mechanical problems. They may be able to start this week pending repairs.

Also this week the crew will continue to apply herbicide on pothos vines in section 4, strawberry guava in section 10 and job's tears and guinea grass in sections 17 and 18.

Citric acid will be applied in sections 3 and 9 or wherever calling frogs are heard.

Help keep Kaua'i coqui-free!

Report coqui frogs!

[643-PEST](tel:643-PEST)



Friday, August 15, Statehood Day

49 years ago Hawaii was admitted as the 50th state of the United States of America. The anniversary in Hawaii was originally called Admission Day and later changed to Statehood Day. Statehood Day is "celebrated" on the third Friday in August.

POSTED:

Friday, August 8, 2008

In this issue:

<i>Work Update</i>	1
<i>Management Unit Map</i>	1
<i>Contact Phone</i>	1
<i>Tidbit</i>	1
<i>A comparison between greenhouse frogs and coqui</i>	2
<i>Notification policy link</i>	2

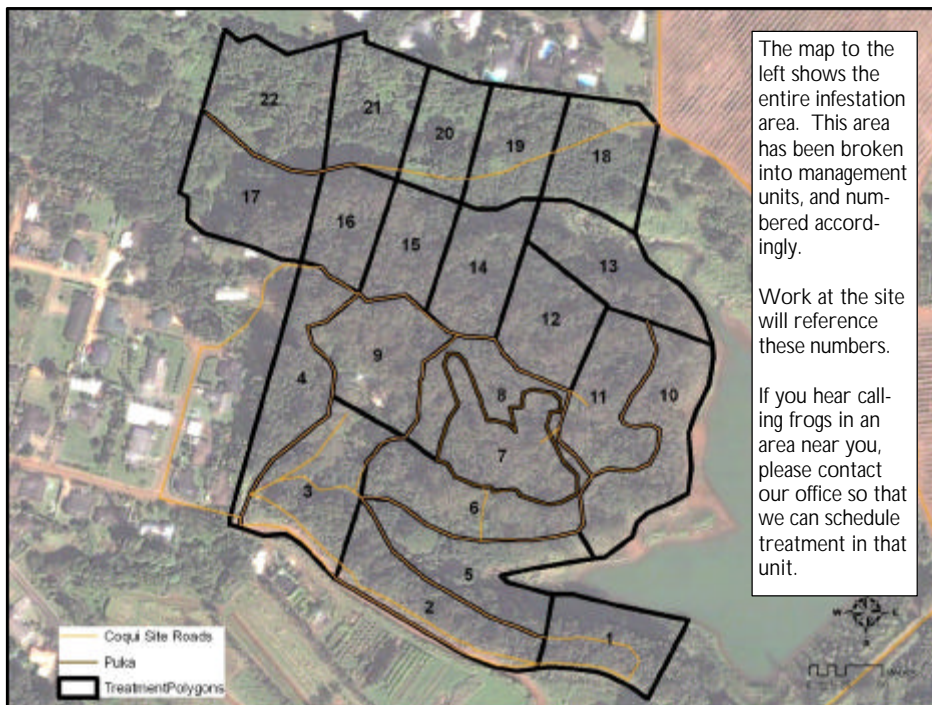
Want more info?

www.hear.org

Contact Phone Numbers:

- **KISC:** 246-0684
(from 7:00 am to 4:00 pm)
- **Crew Supervisor:**
651-8781
- **Hawaii Department of Agriculture:** 274-3069
- **Pest Hotline:** 643-PEST

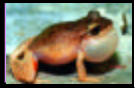
Management Area Map








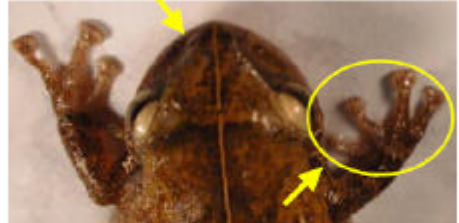
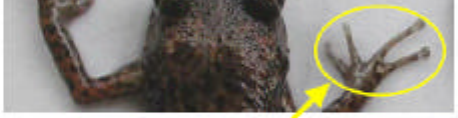

Tidbit

The frog *Lithodytes lineatus*, from Ecuador, is very strange. Its tadpoles are fed by leaf cutter ants!





The difference between Greenhouse and Coqui frogs:

Characteristics	GREENHOUSE FROG <i>E. planirostris</i>	PLEASE REPORT! COQUI FROG <i>E. coqui</i> PLEASE REPORT!
Body shape and size (maximum adult length)	<ul style="list-style-type: none"> < 1 inch long Narrower body shape <p>(not reportable)</p> 	<ul style="list-style-type: none"> Slightly > 1 inch long; adults about 1 1/2 times larger than greenhouse frogs Rounder body shape 
Color	<ul style="list-style-type: none"> Usually copper colored, mottled with black spots No mid-dorsal line (along back from nose to tail) Warty textured skin 	<ul style="list-style-type: none"> Greater variation in color, from light yellow to dark brown May be mottled with black spots Mid-dorsal line (stripe along back) may or may not be visible 
Shape of snout (head portion in front of eyes)	<ul style="list-style-type: none"> Narrower snout 	<ul style="list-style-type: none"> Broader, bow-shaped snout 
Toes and toe pads	<ul style="list-style-type: none"> Claw-like toes; toe pads not distinct 	<ul style="list-style-type: none"> Suction cup-like toe pads 
Male calling sounds	<ul style="list-style-type: none"> Soft, bird-like or cricket-like chirping 	<ul style="list-style-type: none"> Loud two-tone call, "ko-kee"
Habitat	<ul style="list-style-type: none"> Exclusively on ground level 	<ul style="list-style-type: none"> From ground level to tops of trees
Quarantine status	<ul style="list-style-type: none"> Not a quarantine pest 	<ul style="list-style-type: none"> Only an inter-island quarantine pest

This poster can be found at http://www2.ctahr.hawaii.edu/oc/freepubs/pdf/coqui_id.pdf

Work Notification Policy:

<http://www.hear.org/kisc/pdfs/200704coquiworknotificationpolicy.pdf>