

# Risk assessment for the National Pest Plant Accord

## WHICH PLANT SPECIES SHOULD BE BANNED FROM SALE?

Melanie Newfield, MAF Biosecurity New Zealand

Paul Champion, National Institute of Water and Atmospheric Research

# What is the NPPA?

- National Pest Plant Accord
- New Zealand's approach to managing invasive plants in the horticultural trade
- Cooperative agreement between central government, local government and horticultural industry
- Emphasis on education and awareness, but has legal backing through the Biosecurity Act (1993)



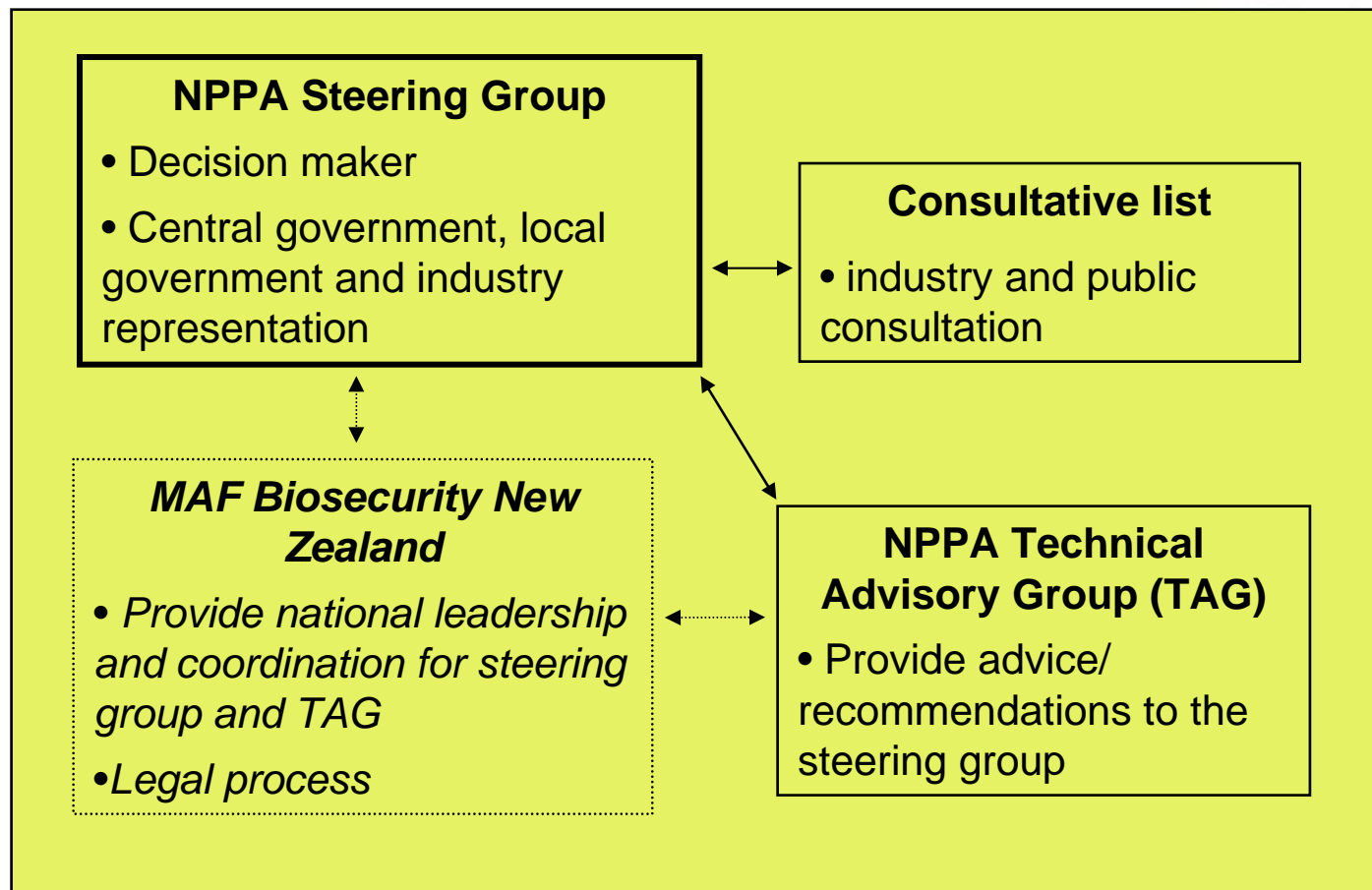
Image: NIWA

# Process for inclusion on the NPPA

- Species nominated by members of “Consultative List”
- Risk assessment and prioritisation by “Technical Advisory Group” (TAG)
- Industry and public consultation on TAG assessments
- Assessment of cost/ benefit, public submissions and final decision made by Steering Committee



# Simplified governance structure for the NPPA



# Criteria for inclusion on the NPPA

(Champion 2005)

- Weed risk – threat to economic, environmental, health and cultural values
- Effectiveness of the NPPA mechanism for achieving management objectives for each species
- Regulatory impacts (for example, cost to nursery trade)
- The first two points were assessed by the Technical Advisory Group



Image: DOC



# Criteria for TAG assessment

- Weed risk assessment
  - invasiveness in NZ and overseas
  - undesirable traits
  - spread ability
  - competitive ability
  - impact on values
  - resistance to management



Image: F and K Starr

# Criteria for TAG assessment

- Is NPPA the correct tool?
  - appeal as a cultivated plant
  - current and potential distribution in New Zealand
  - current control approaches
  - management status



# TAG objectives

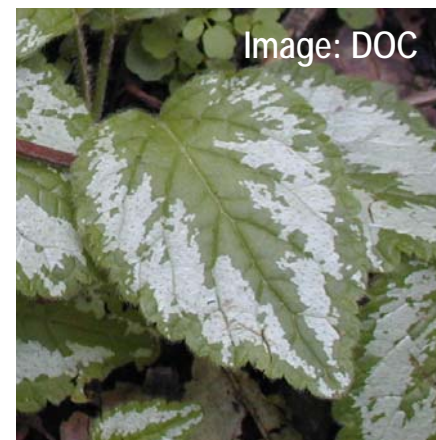
- 92 species on the 2001 NPPA list
- 108 additional species nominated
- Considering the criteria:
  - how to assess and prioritise 200 species nominated for inclusion
  - 7 TAG members
  - timeframe





# NPPA requirements

- Obvious similarities to weed risk assessment  
but...
- Not strictly a risk assessment process
  - yes/ no – is this tool appropriate for mangement?
- Worst weeds weren't necessarily the species most effectively managed by NPPA
  - prioritise – not by invasiveness, but by management benefit



# Available risk assessment systems

- Plant import screening (Williams 1996)
- Aquatic plants (Champion and Clayton 2000)
- Weeds of conservation land
  - Owen 1996 (“DOC weediness score”)
  - Williams, Wilton and Spencer 2002 (border)
  - Williams and Newfield 2002/ Williams, Boow, LaCock and Wilson 2004 (prioritising control)
- None designed to answer NPPA questions



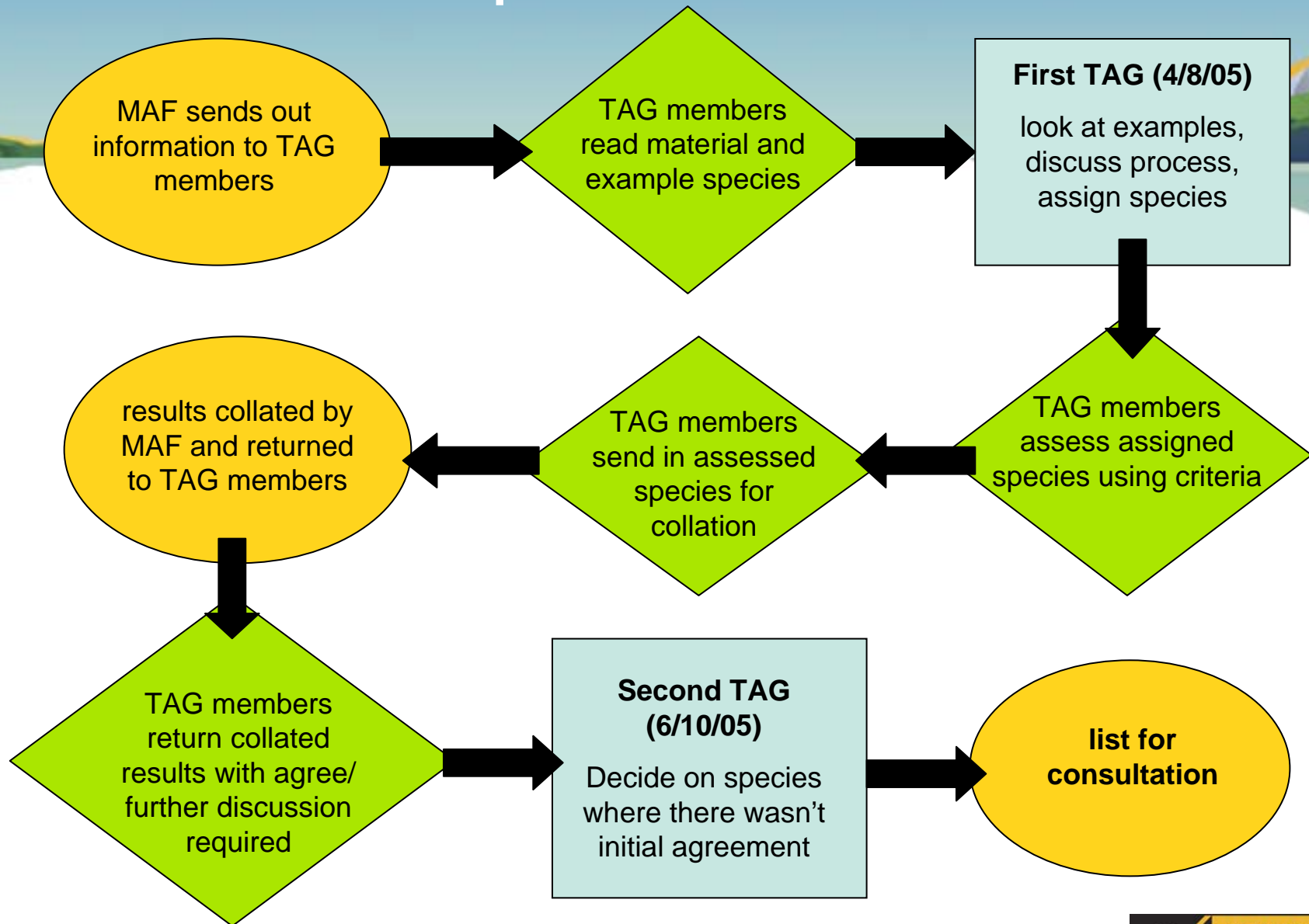
Image: DOC

# Available risk assessment systems

- Available systems either:
  - assess likelihood of plants becoming a problem
  - combine likelihood and impact for a subset of invasive plants
- None includes management benefit for restricting distribution in horticulture
- Available risk assessment systems could not be used to prioritise species for inclusion on the NPPA



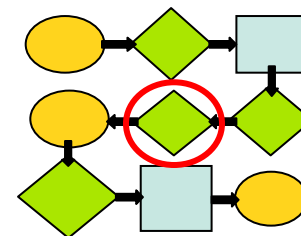
# Assessment process for NPPA TAG





# Results at first stage of assessment

Category	Number of species
yes high priority	83
yes medium priority	48
yes low priority	22
uncertain needs discussion	11
uncertain needs more information	5
no	21
other	10
total	200



# Second stage of assessment

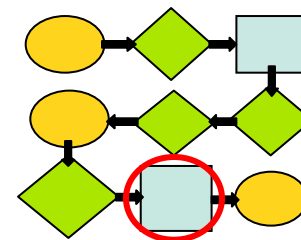
- All assessments sent to all TAG members for additional comment
- Prioritised species for discussion at TAG meeting
  - species prioritised as “discussion needed”
  - species where TAG members had different opinions on whether or not to include (very few)
  - species where TAG members had different opinions over priorities



Image: MAF

# Final TAG recommendations

Category	Number of species
yes high priority	82
yes medium priority	51
yes low priority	28
no – reassess next round	11
no	28
total	200



# Final NPPA list – decision by Steering Group

- some species recommended for inclusion by TAG not included as they met first two criteria but not the last
  - *Weed impact*
  - *Effectiveness of the NPPA mechanism*
  - Regulatory impacts
- some species not included due to regulatory impact
- 2006 list contains 109 species and 4 genera
- 3 more species added in 2007





# Where to from here?

- review again in 2011
- better ways to compare current and potential distribution
- better ways to assess cultivars
  - currently three species where certain “cultivars” excluded from NPPA
  - one “cultivar” on NPPA where main species is not



Image: Trevor James

# Acknowledgements

- TAG members

- Graeme Bourdôt, Paul Champion, Peter Heenan, Ian Popay, Kathryn Whaley, Peter Williams (Keith Hammett from 2006)

- MAFBNZ staff

- Shiroma Sathyapala, Suzanne Main, José Derraik

- Steering Group members

- Andrew Harrison (MAFBNZ), Kate McAlpine (DOC), Jack Craw (ARC)/ Wayne O'Donnell (GW), Alan Criglington, Ian Duncalf, Malcolm Woolmore (NGIA)

NPPA weed risk assessment queries  
[melanie.newfield@maf.govt.nz](mailto:melanie.newfield@maf.govt.nz)

General NPPA queries  
[maria.sheldon@maf.govt.nz](mailto:maria.sheldon@maf.govt.nz)